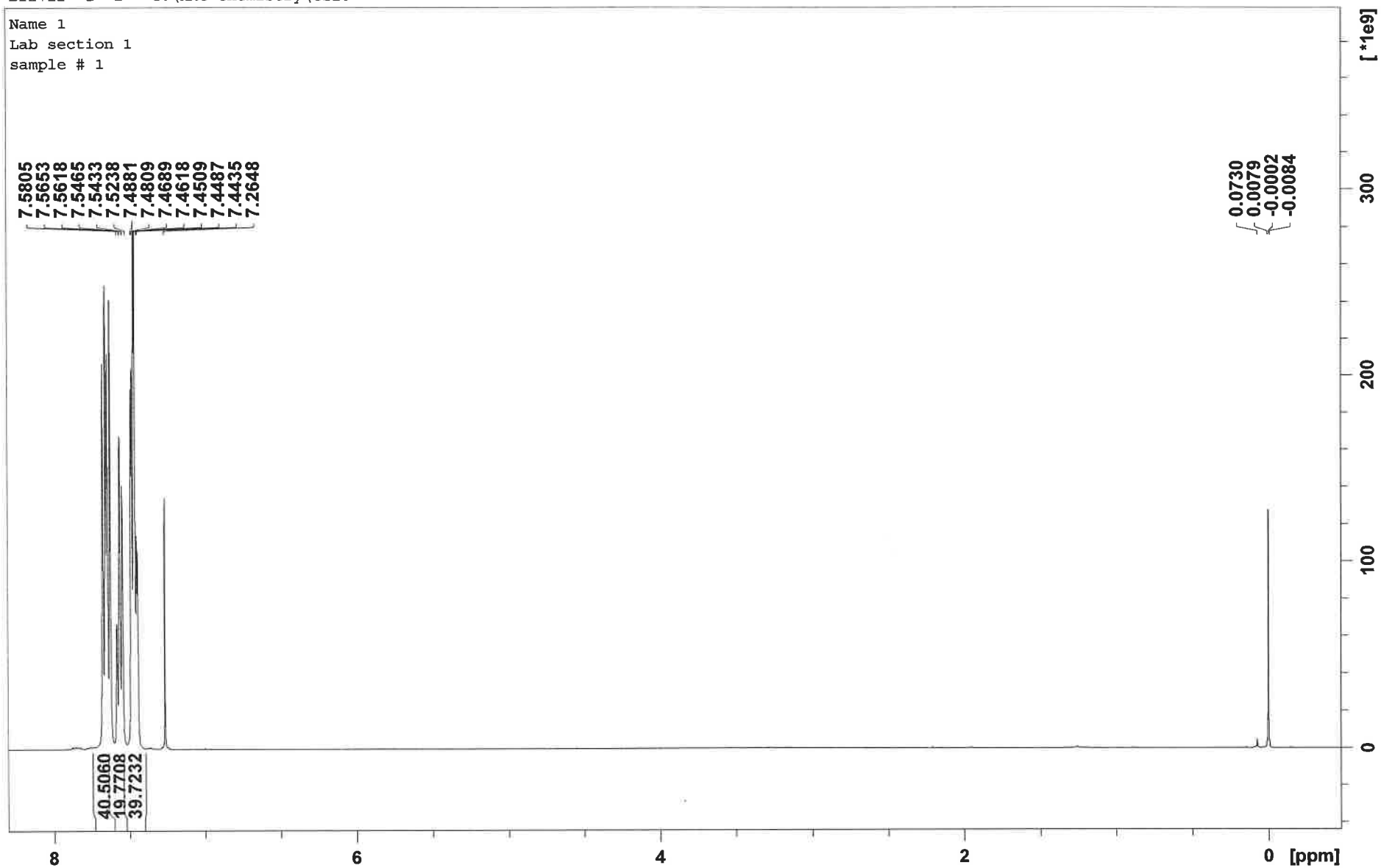


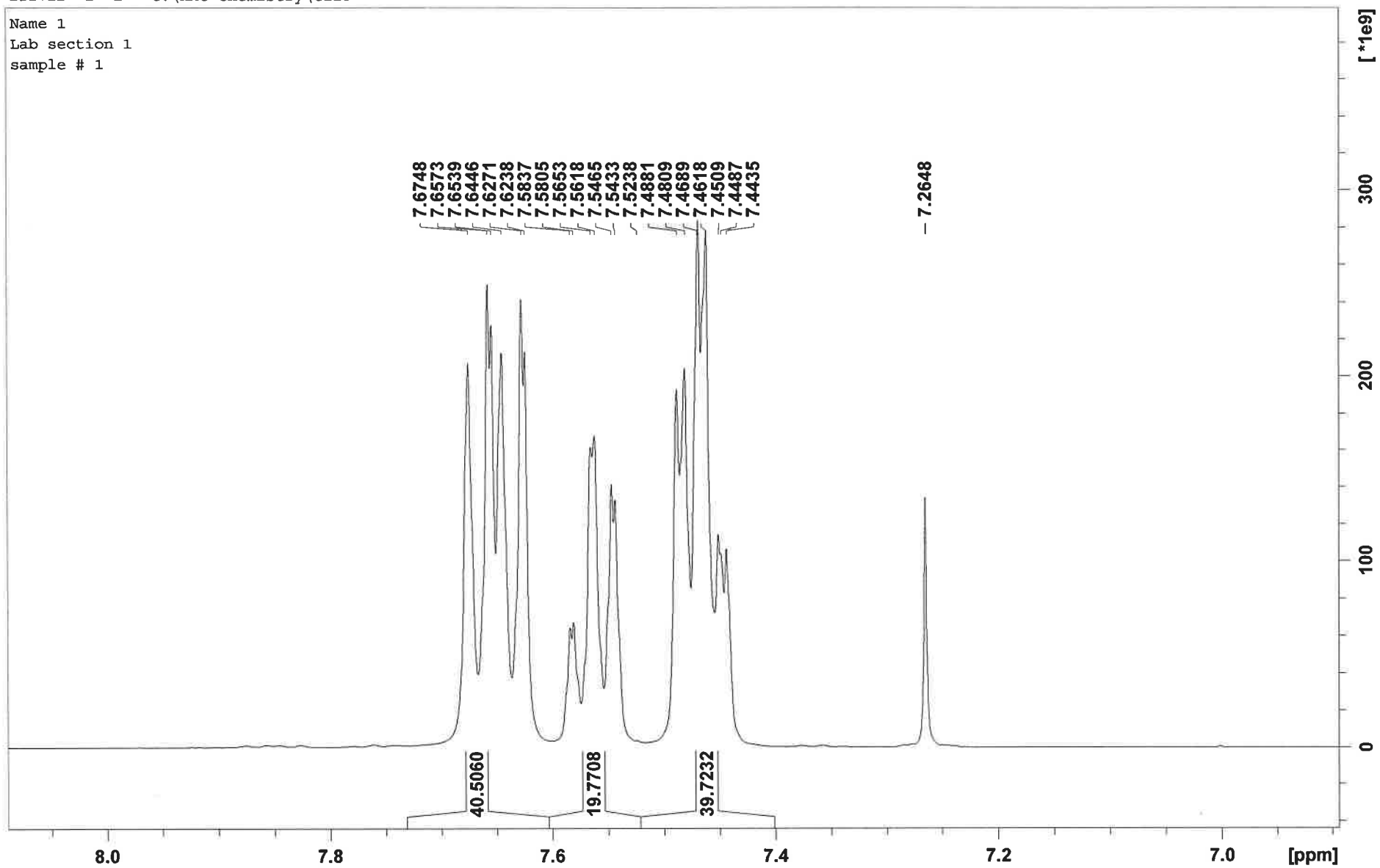
Br2+I2 1 1 "C:\HMC Chemistry\C110"

Name 1  
Lab section 1  
sample # 1



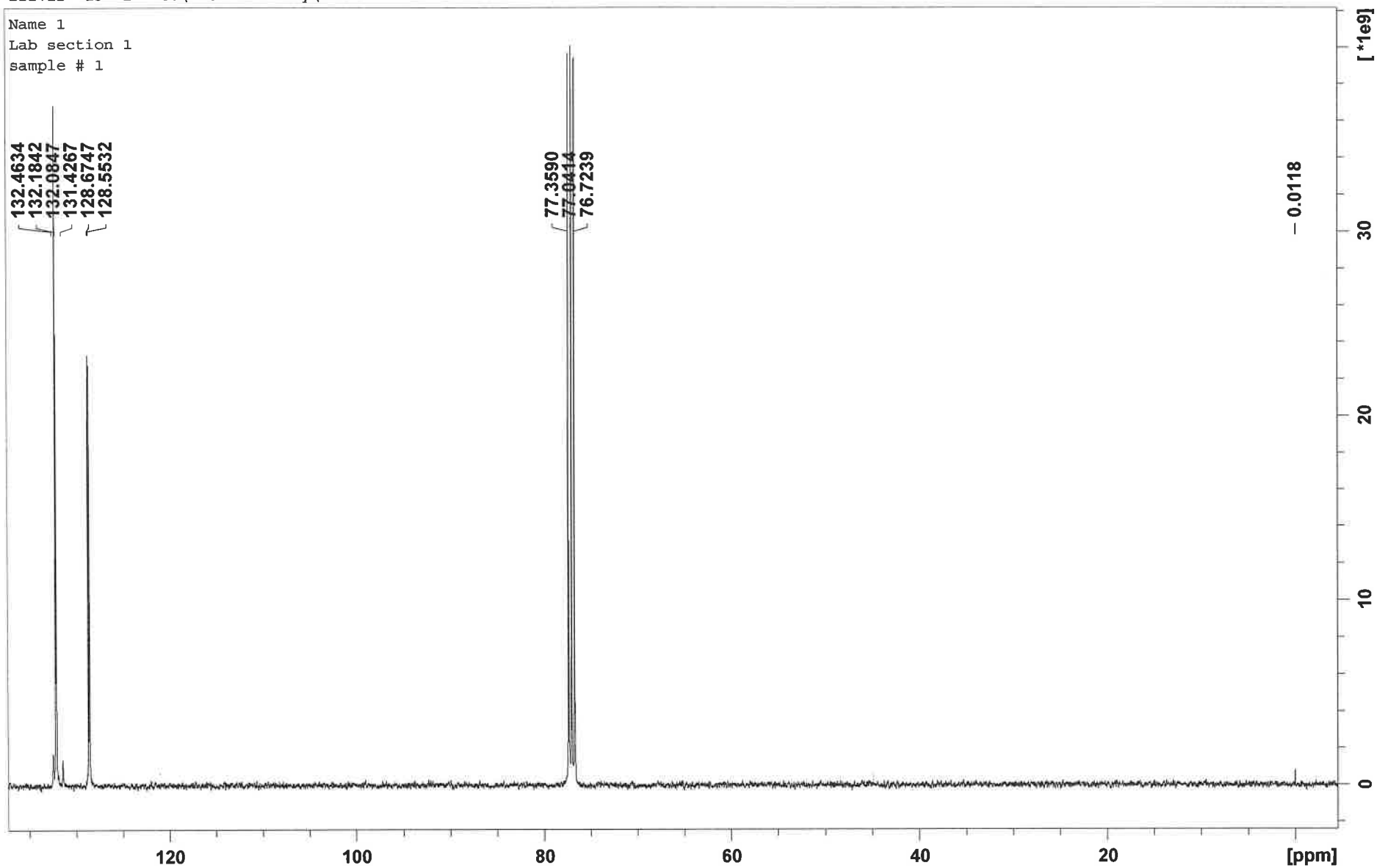
Br2+I2 1 1 "C:\HMC Chemistry\C110"

Name 1  
Lab section 1  
sample # 1



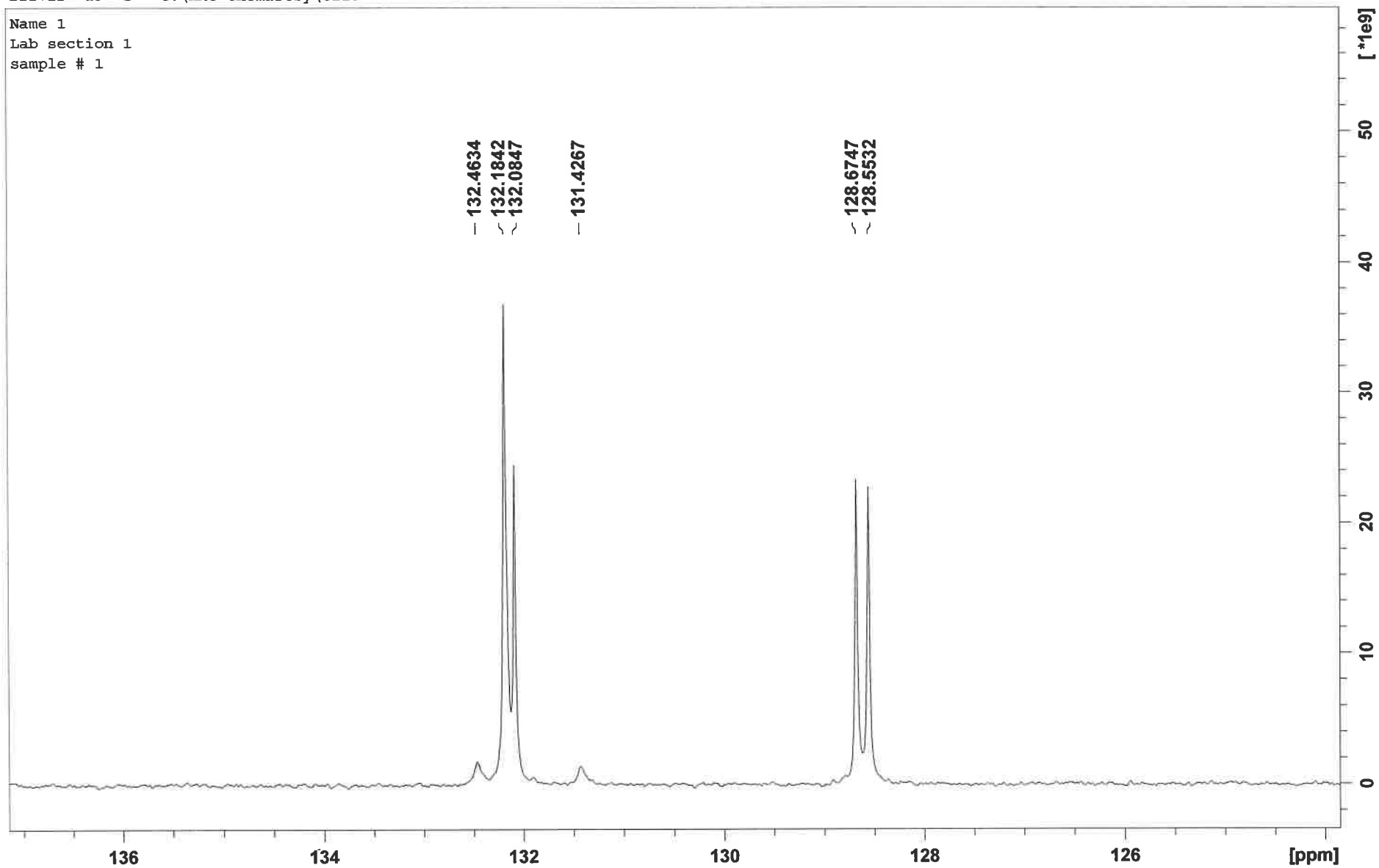
Br2+I2 13 1 "C:\HMC Chemistry\C110"

Name 1  
Lab section 1  
sample # 1



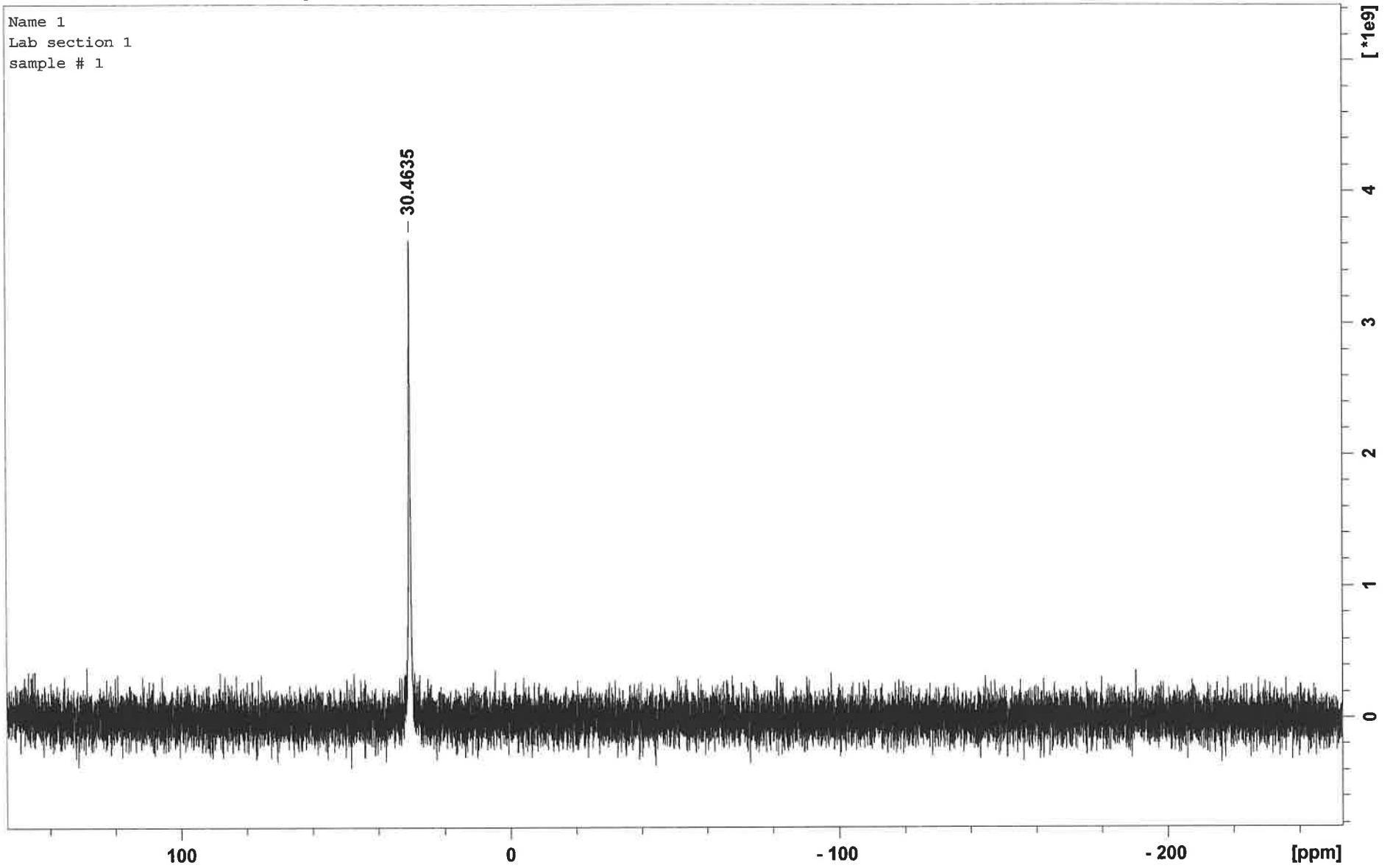
Br2+I2 13 1 "C:\HMC Chemistry\C110"

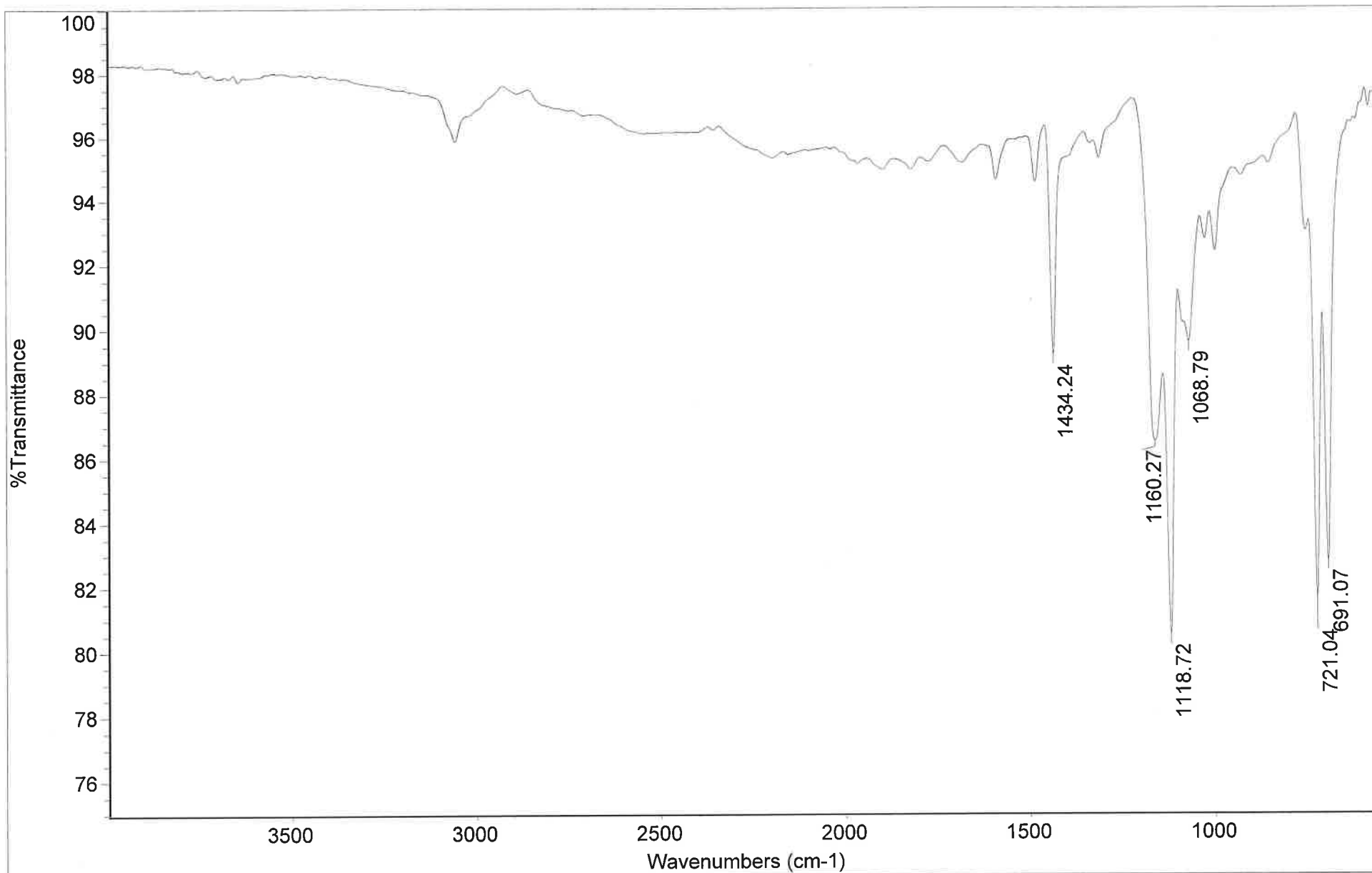
Name 1  
Lab section 1  
sample # 1



Br2+I2 31 1 "C:\HMC Chemistry\C110"

Name 1  
Lab section 1  
sample # 1





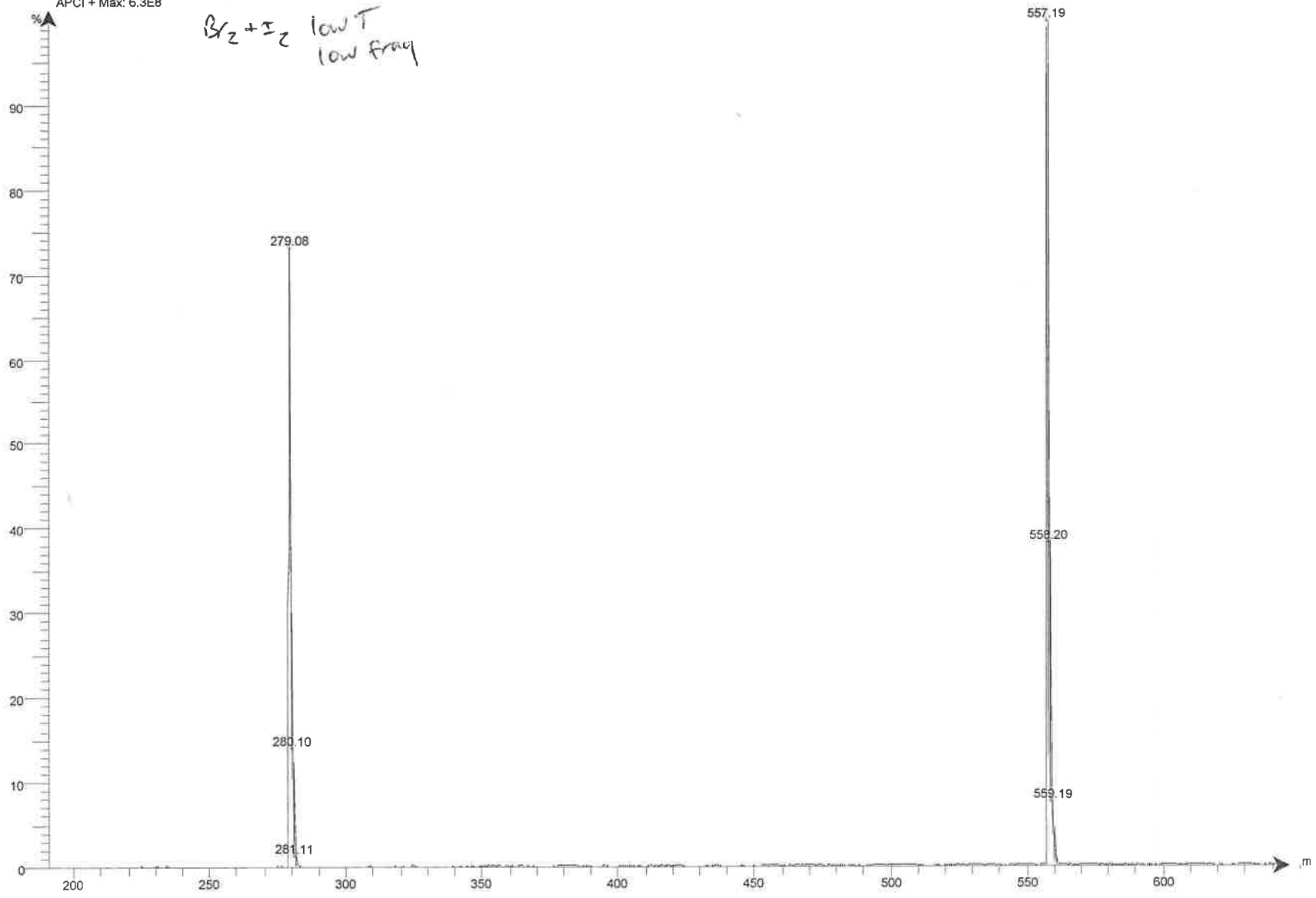
Date: Tue Dec 29 15:39:03 2020 (GMT-08:0Br2 + I2)

Scans: 16

Resolution: 16.000

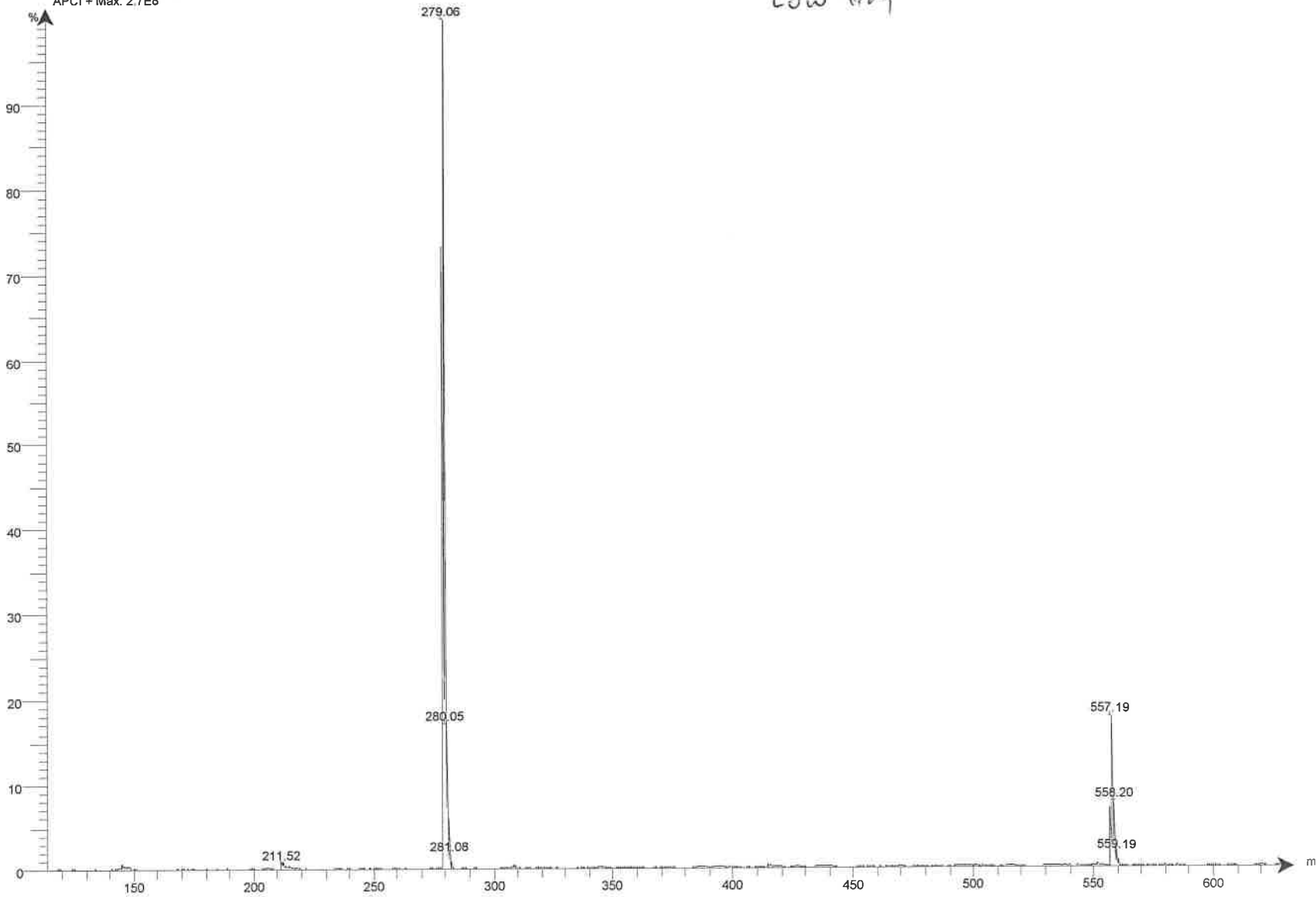
Intensity Spectrum RT 0.69 - 0.94 (15 scans) - Background Subtracted 0.16 - 0.44  
2021\_1\_7\_10\_49\_28\_is1 2021.01.07 10:50:17 Br2+I2;  
APCI+ Max: 6.3E8

*Br<sub>2</sub>+I<sub>2</sub> low T  
low frag*

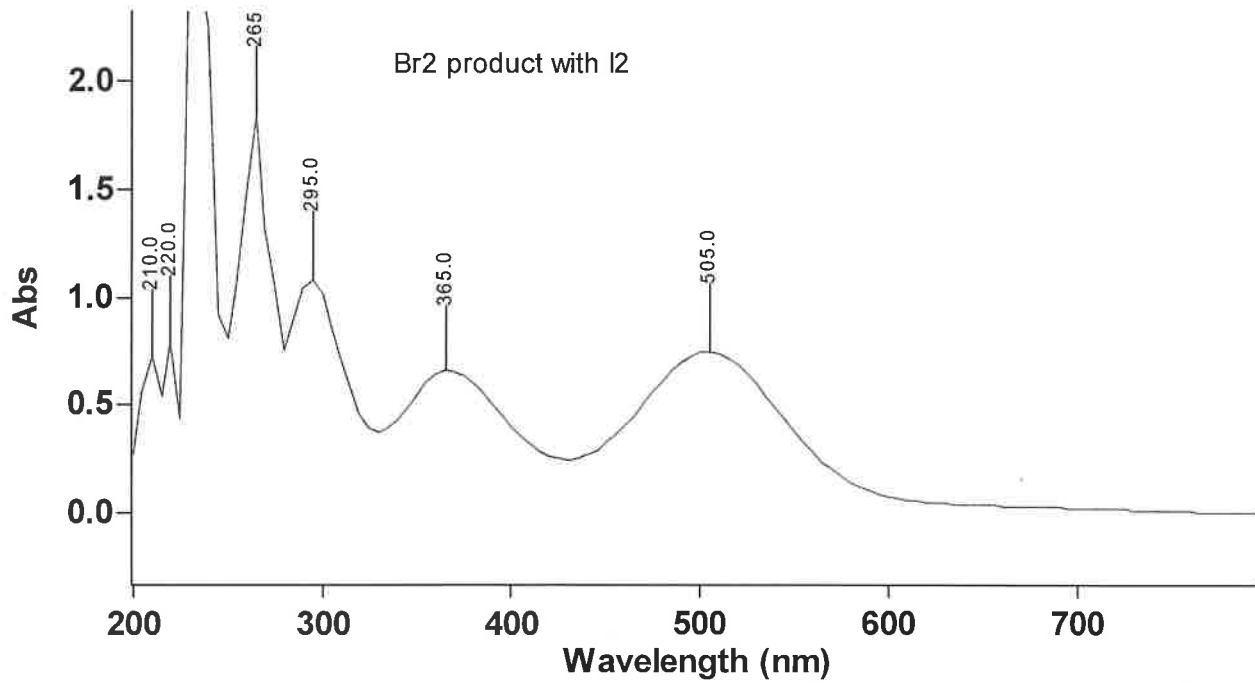


Intensity Spectrum RT 0.68 - 0.78 (7 scans) - Background Subtracted 0.07 - 0.55  
2021\_1\_7\_10\_55\_37\_is1 2021.01.07 10:55:50 Br2+I2;  
APCI + Max: 2.7E8

$Br_2 + I_2$  high T  
Low frag







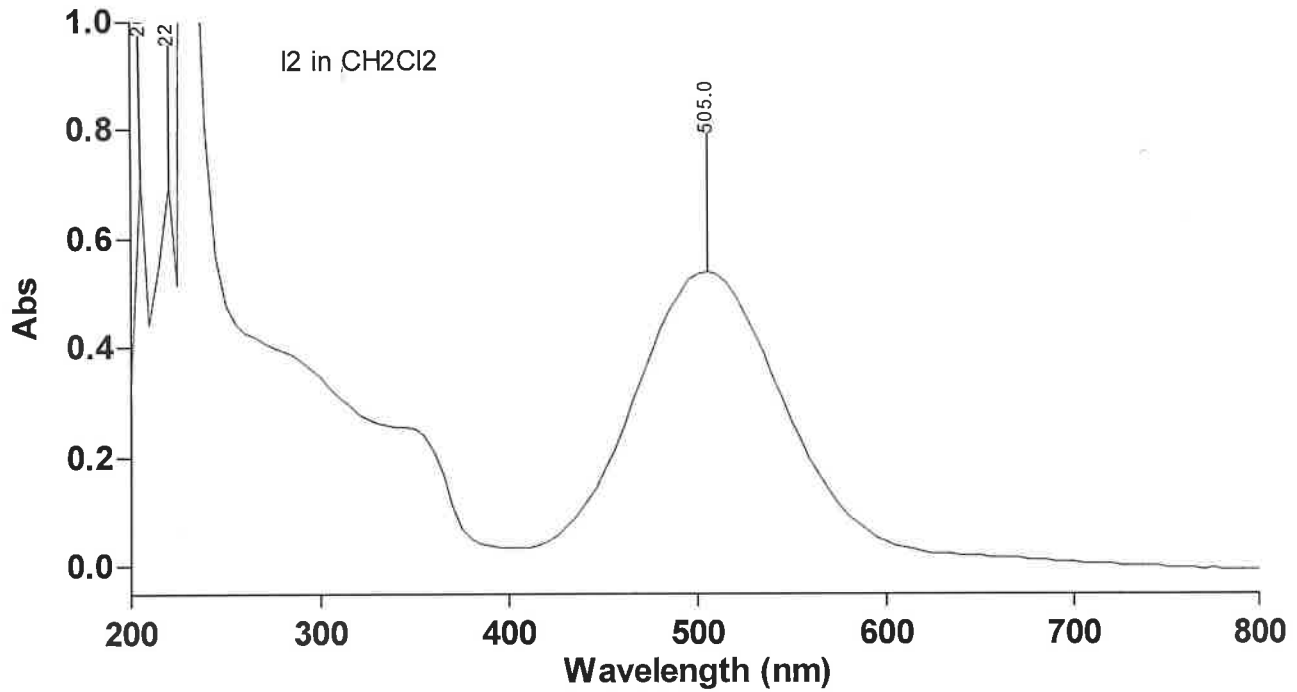
## Scan Analysis Report

Report Time : Wed 16 Dec 09:30:36 AM 2020  
Method  
Batch: C:\Users\Student\Desktop\PPH3 reactions.DSW  
Software version: 5.1.0.1016  
Operator:

## Instrument Parameters

Instrument Cary 60  
Instrument Version 2.00  
Start (nm) 800.0  
Stop (nm) 200.0  
X Mode Nanometers  
Y Mode Abs  
UV-Vis Scan Rate (nm/min) 24000.00  
UV-Vis Data Interval (nm) 5.00  
UV-Vis Ave. Time (sec) 0.0125  
Beam Mode Dual Beam  
Baseline Correction On  
Baseline Type Zero/baseline correction  
Baseline File Name  
Baseline Std Ref File Name  
Cycle Mode Off  
Comments

**Sample Name:** iodine  
Collection Time 12/16/2020 9:30:39 AM



## Scan Analysis Report

Report Time : Wed 16 Dec 09:30:36 AM 2020  
Method  
Batch: C:\Users\Student\Desktop\PPH3 reactions.DSW  
Software version: 5.1.0.1016  
Operator:

### Instrument Parameters

Instrument Cary 60  
Instrument Version 2.00  
Start (nm) 800.0  
Stop (nm) 200.0  
X Mode Nanometers  
Y Mode Abs  
UV-Vis Scan Rate (nm/min) 24000.00  
UV-Vis Data Interval (nm) 5.00  
UV-Vis Ave. Time (sec) 0.0125  
Beam Mode Dual Beam  
Baseline Correction On  
Baseline Type Zero/baseline correction  
Baseline File Name  
Baseline Std Ref File Name  
Cycle Mode Off  
Comments

### Sample Name:

**iodine**

Collection Time

12/16/2020 9:30:39 AM