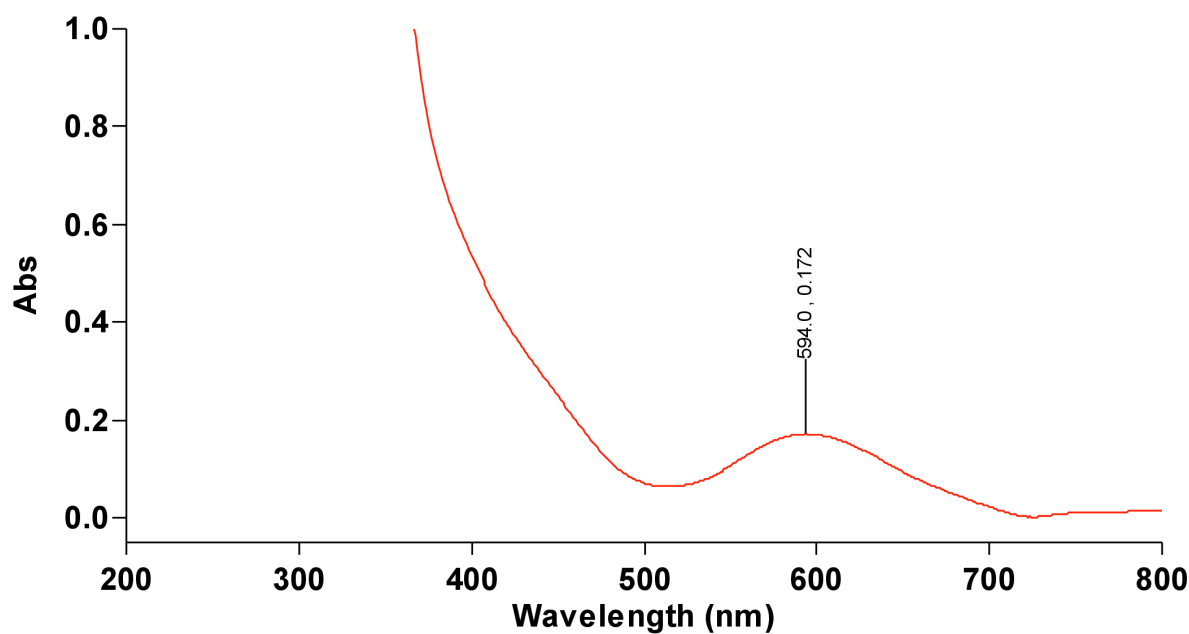


1/7/2021 2:08:51 PM

Page 1 of 4

**Zero Report**

Read Abs (800.0 nm)
Zero 0.0518

Scan Analysis Report

Report Time : Thu 07 Jan 12:03:02 PM 2021
Method
Batch: D:\chem 110\S-rxn-dilute.DSW
Software version: 5.1.0.1016
Operator:

Instrument Parameters

Instrument Cary 60
Instrument Version 2.00
Start (nm) 800.0
Stop (nm) 200.0
X Mode Nanometers
Y Mode Abs
UV-Vis Scan Rate (nm/min) 600.00
UV-Vis Data Interval (nm) 1.00
UV-Vis Ave. Time (sec) 0.1000
Beam Mode Dual Beam
Baseline Correction Off
Cycle Mode Off
Comments

Zero Report

Read Abs (800.0 nm)
Zero 0.0518

Sample Name: sample1

1/7/2021 2:08:51 PM

Page 2 of 4

Collection Time

1/7/2021 12:03:03 PM

Peak Table

| Peak Style | Peaks |
|-----------------|--------------------|
| Peak Threshold | 0.0100 |
| Range | 800.0nm to 200.0nm |
| Wavelength (nm) | Abs |
| 504.0 | 0.140 |
| 226.0 | 3.707 |
| 223.0 | 3.620 |
| 220.0 | 3.568 |
| 216.0 | 3.500 |
| 214.0 | 3.485 |
| 212.0 | 3.538 |
| 209.0 | 3.582 |
| 206.0 | 3.570 |

Scan Analysis Report

Report Time : Thu 07 Jan 01:37:16 PM 2021
Method
Batch: D:\Feacac3.DSW
Software version: 5.1.0.1016
Operator:

Instrument Parameters

Instrument Cary 60
Instrument Version 2.00
Start (nm) 800.0
Stop (nm) 200.0
X Mode Nanometers
Y Mode Abs
UV-Vis Scan Rate (nm/min) 600.00
UV-Vis Data Interval (nm) 1.00
UV-Vis Ave. Time (sec) 0.1000
Beam Mode Dual Beam
Baseline Correction Off
Cycle Mode Off
Comments

Zero Report

Read Abs (800.0 nm)
Zero 0.0518

Sample Name: sample2

Collection Time 1/7/2021 1:37:17 PM

Peak Table

| Peak Style | Peaks |
|-----------------|--------------------|
| Peak Threshold | 0.0100 |
| Range | 800.0nm to 200.0nm |
| Wavelength (nm) | Abs |
| 429.0 | 0.673 |
| 351.0 | 0.856 |
| 285.0 | 4.302 |

1/7/2021 2:08:51 PM

Page 3 of 4

| | |
|-------|--------|
| 283.0 | 4.319 |
| 280.0 | 4.573 |
| 278.0 | 10.000 |
| 276.0 | 5.351 |
| 273.0 | 10.000 |
| 270.0 | 10.000 |
| 267.0 | 10.000 |
| 265.0 | 5.251 |
| 263.0 | 10.000 |
| 260.0 | 4.622 |
| 258.0 | 4.680 |
| 252.0 | 4.418 |
| 250.0 | 4.102 |
| 248.0 | 4.010 |
| 243.0 | 3.764 |
| 240.0 | 3.794 |
| 238.0 | 3.870 |
| 236.0 | 3.994 |
| 232.0 | 3.966 |
| 226.0 | 3.656 |
| 223.0 | 3.531 |
| 219.0 | 3.537 |
| 213.0 | 3.593 |
| 209.0 | 3.758 |
| 207.0 | 3.817 |
| 205.0 | 3.989 |
| 202.0 | 3.926 |

Scan Analysis Report

| | |
|-------------------|-----------------------------|
| Report Time : | Thu 07 Jan 02:07:41 PM 2021 |
| Method | |
| Batch: | D:\Coacac3.DSW |
| Software version: | 5.1.0.1016 |
| Operator: | |

Instrument Parameters

| | |
|---------------------------|------------|
| Instrument | Cary 60 |
| Instrument Version | 2.00 |
| Start (nm) | 800.0 |
| Stop (nm) | 200.0 |
| X Mode | Nanometers |
| Y Mode | Abs |
| UV-Vis Scan Rate (nm/min) | 600.00 |
| UV-Vis Data Interval (nm) | 1.00 |
| UV-Vis Ave. Time (sec) | 0.1000 |
| Beam Mode | Dual Beam |
| Baseline Correction | Off |
| Cycle Mode | Off |
| Comments | |

Zero Report

| | |
|------|----------------|
| Read | Abs (800.0 nm) |
| Zero | 0.0518 |

1/7/2021 2:08:51 PM

Page 4 of 4

Sample Name:**sample3**

Collection Time

1/7/2021 2:07:43 PM

Peak Table

| Peak Style | Peaks |
|-----------------|--------------------|
| Peak Threshold | 0.0100 |
| Range | 800.0nm to 200.0nm |
| Wavelength (nm) | Abs |
| 594.0 | 0.172 |
| 348.0 | 3.755 |
| 346.0 | 4.166 |
| 343.0 | 4.788 |
| 341.0 | 10.000 |
| 339.0 | 4.025 |
| 334.0 | 4.612 |
| 331.0 | 5.285 |
| 327.0 | 10.000 |
| 324.0 | 10.000 |
| 320.0 | 10.000 |
| 317.0 | 4.884 |
| 315.0 | 10.000 |
| 312.0 | 10.000 |
| 310.0 | 10.000 |
| 308.0 | 10.000 |
| 303.0 | 10.000 |
| 301.0 | 10.000 |
| 297.0 | 10.000 |
| 293.0 | 10.000 |
| 290.0 | 10.000 |
| 288.0 | 5.067 |
| 286.0 | 10.000 |
| 281.0 | 5.390 |
| 279.0 | 10.000 |
| 275.0 | 5.313 |
| 273.0 | 10.000 |
| 270.0 | 10.000 |
| 266.0 | 10.000 |
| 261.0 | 5.194 |
| 257.0 | 10.000 |
| 249.0 | 10.000 |
| 247.0 | 4.668 |
| 245.0 | 4.535 |
| 242.0 | 4.474 |
| 240.0 | 10.000 |
| 236.0 | 10.000 |
| 231.0 | 4.895 |
| 229.0 | 4.788 |
| 227.0 | 4.378 |
| 224.0 | 4.278 |
| 222.0 | 4.129 |
| 219.0 | 4.037 |
| 216.0 | 4.069 |
| 214.0 | 4.243 |
| 209.0 | 4.142 |
| 207.0 | 4.158 |
| 204.0 | 4.105 |