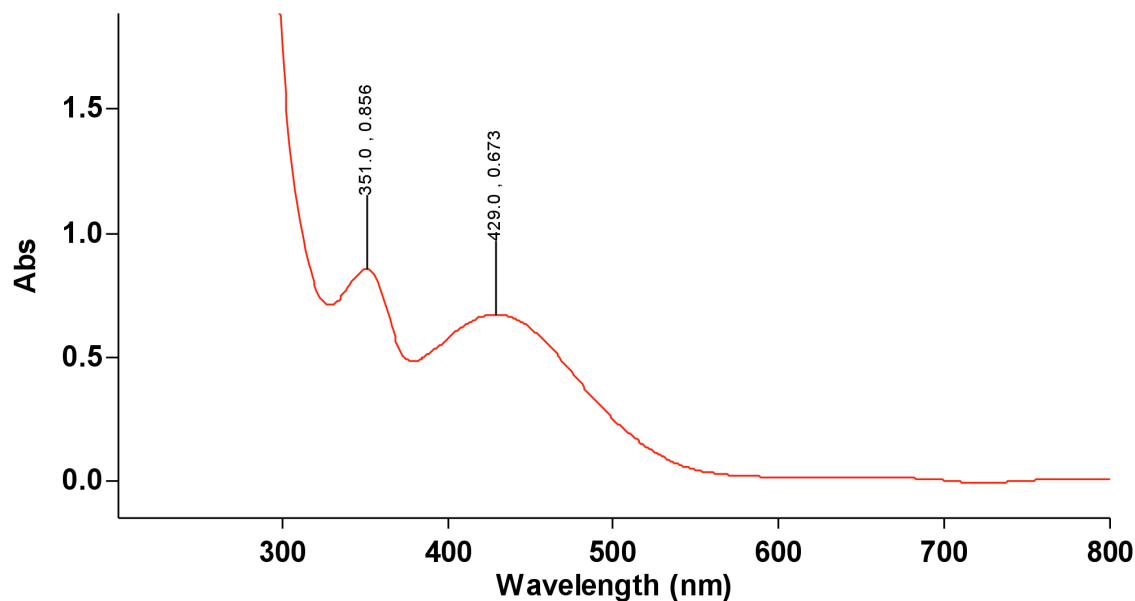


1/7/2021 1:40:40 PM

Page 1 of 3

**Zer
o
Rep
ort**

Read Abs (800.0 nm)
Zero 0.0518

Scan Analysis Report

Report Time : Thu 07 Jan 12:03:02 PM 2021
Method
Batch: D:\chem 110\S-rxn-dilute.DSW
Software version: 5.1.0.1016
Operator:

Instrument Parameters

Instrument Cary 60
Instrument Version 2.00
Start (nm) 800.0
Stop (nm) 200.0
X Mode Nanometers
Y Mode Abs
UV-Vis Scan Rate (nm/min) 600.00
UV-Vis Data Interval (nm) 1.00
UV-Vis Ave. Time (sec) 0.1000
Beam Mode Dual Beam
Baseline Correction Off
Cycle Mode Off
Comments

Zero Report

Read Abs (800.0 nm)
Zero 0.0518

Sample Name: **sample1**

1/7/2021 1:40:40 PM

Page 2 of 3

Collection Time

1/7/2021 12:03:03 PM

Peak Table

Peak Style	Peaks
Peak Threshold	0.0100
Range	800.0nm to 200.0nm
Wavelength (nm)	Abs
504.0	0.140
226.0	3.707
223.0	3.620
220.0	3.568
216.0	3.500
214.0	3.485
212.0	3.538
209.0	3.582
206.0	3.570

Scan Analysis Report

Report Time : Thu 07 Jan 01:37:16 PM 2021
Method
Batch: D:\Feacac3.DSW
Software version: 5.1.0.1016
Operator:

Instrument Parameters

Instrument Cary 60
Instrument Version 2.00
Start (nm) 800.0
Stop (nm) 200.0
X Mode Nanometers
Y Mode Abs
UV-Vis Scan Rate (nm/min) 600.00
UV-Vis Data Interval (nm) 1.00
UV-Vis Ave. Time (sec) 0.1000
Beam Mode Dual Beam
Baseline Correction Off
Cycle Mode Off
Comments

Zero Report

Read Abs (800.0 nm)
Zero 0.0518

Sample Name: sample2

Collection Time 1/7/2021 1:37:17 PM

Peak Table

Peak Style	Peaks
Peak Threshold	0.0100
Range	800.0nm to 200.0nm
Wavelength (nm)	Abs
429.0	0.673
351.0	0.856
285.0	4.302

1/7/2021 1:40:40 PM

Page 3 of 3

283.0	4.319
280.0	4.573
278.0	10.000
276.0	5.351
273.0	10.000
270.0	10.000
267.0	10.000
265.0	5.251
263.0	10.000
260.0	4.622
258.0	4.680
252.0	4.418
250.0	4.102
248.0	4.010
243.0	3.764
240.0	3.794
238.0	3.870
236.0	3.994
232.0	3.966
226.0	3.656
223.0	3.531
219.0	3.537
213.0	3.593
209.0	3.758
207.0	3.817
205.0	3.989
202.0	3.926