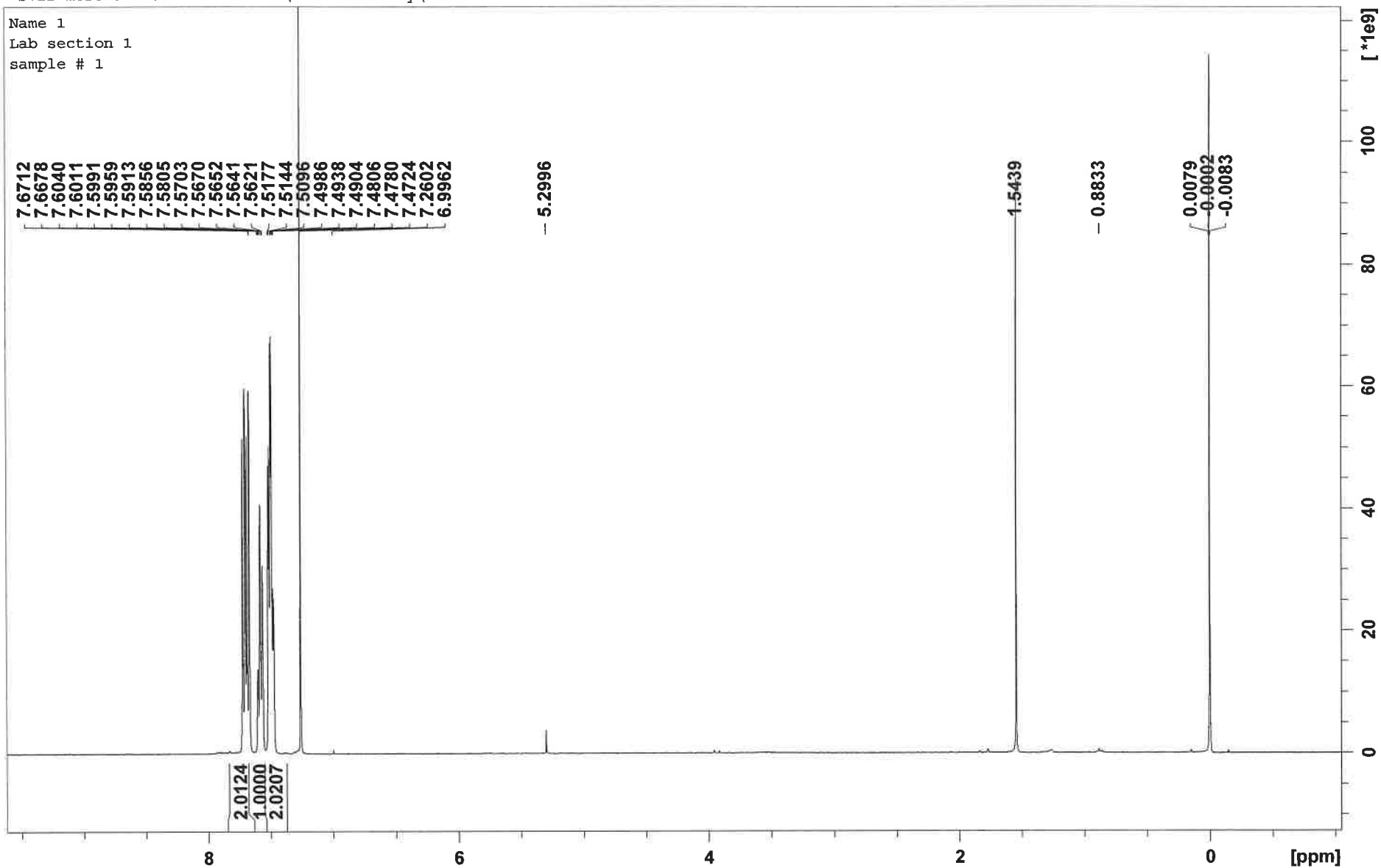


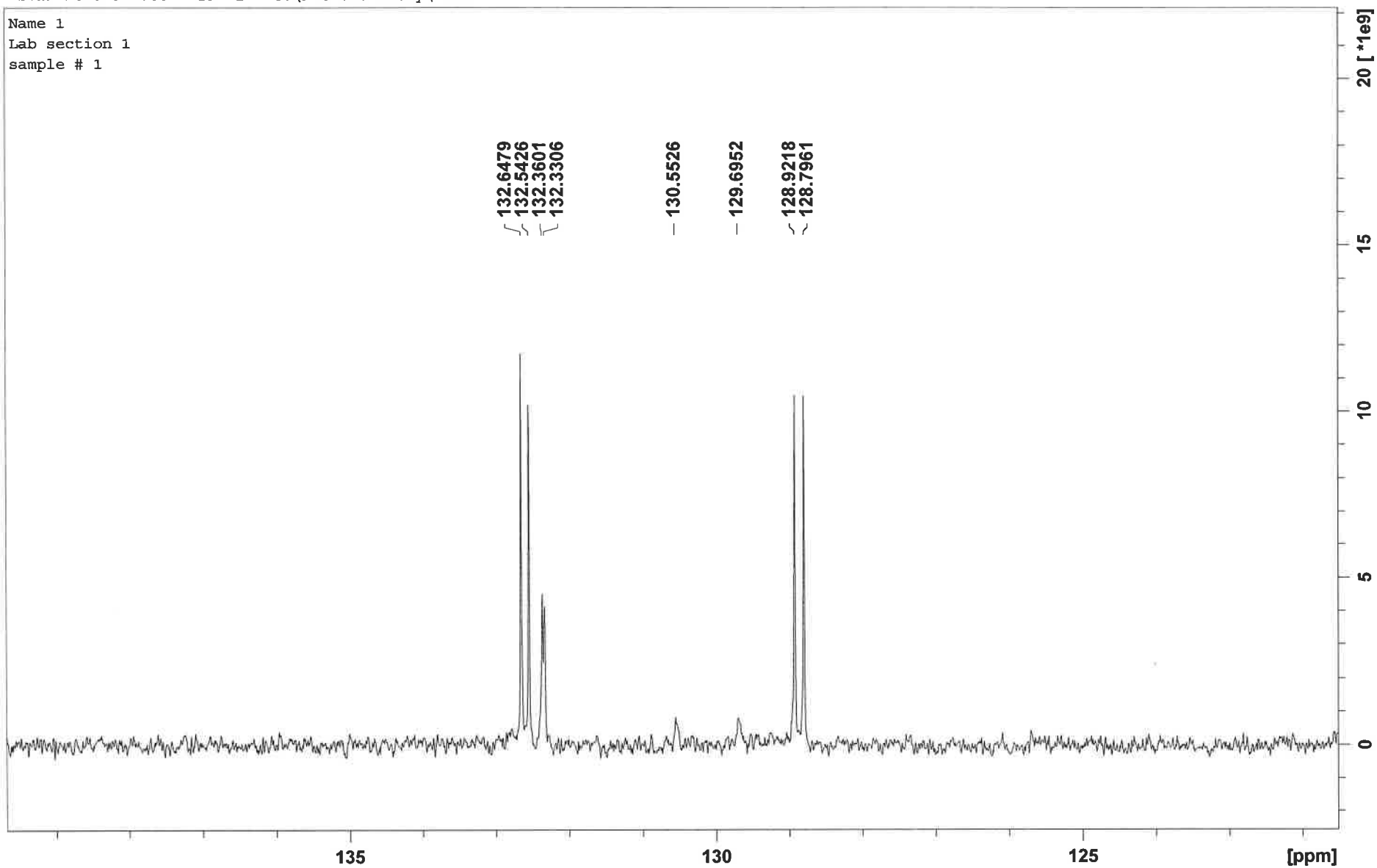
"S+I2 more dilute" 1 1 "C:\HMC Chemistry\C110"

Name 1  
Lab section 1  
sample # 1



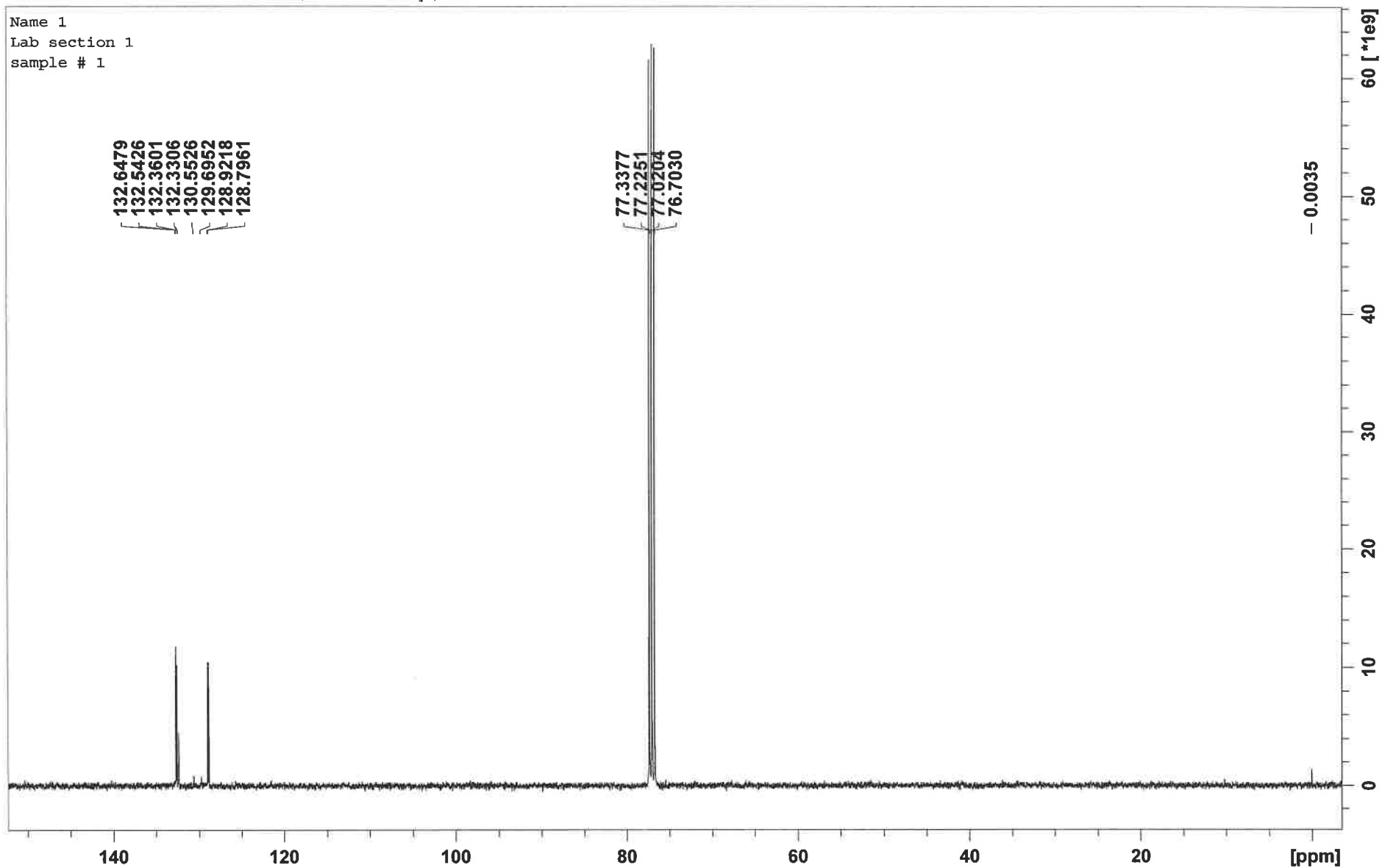
"S+I2 more dilute" 13 1 "C:\HMC Chemistry\C110"

Name 1  
Lab section 1  
sample # 1



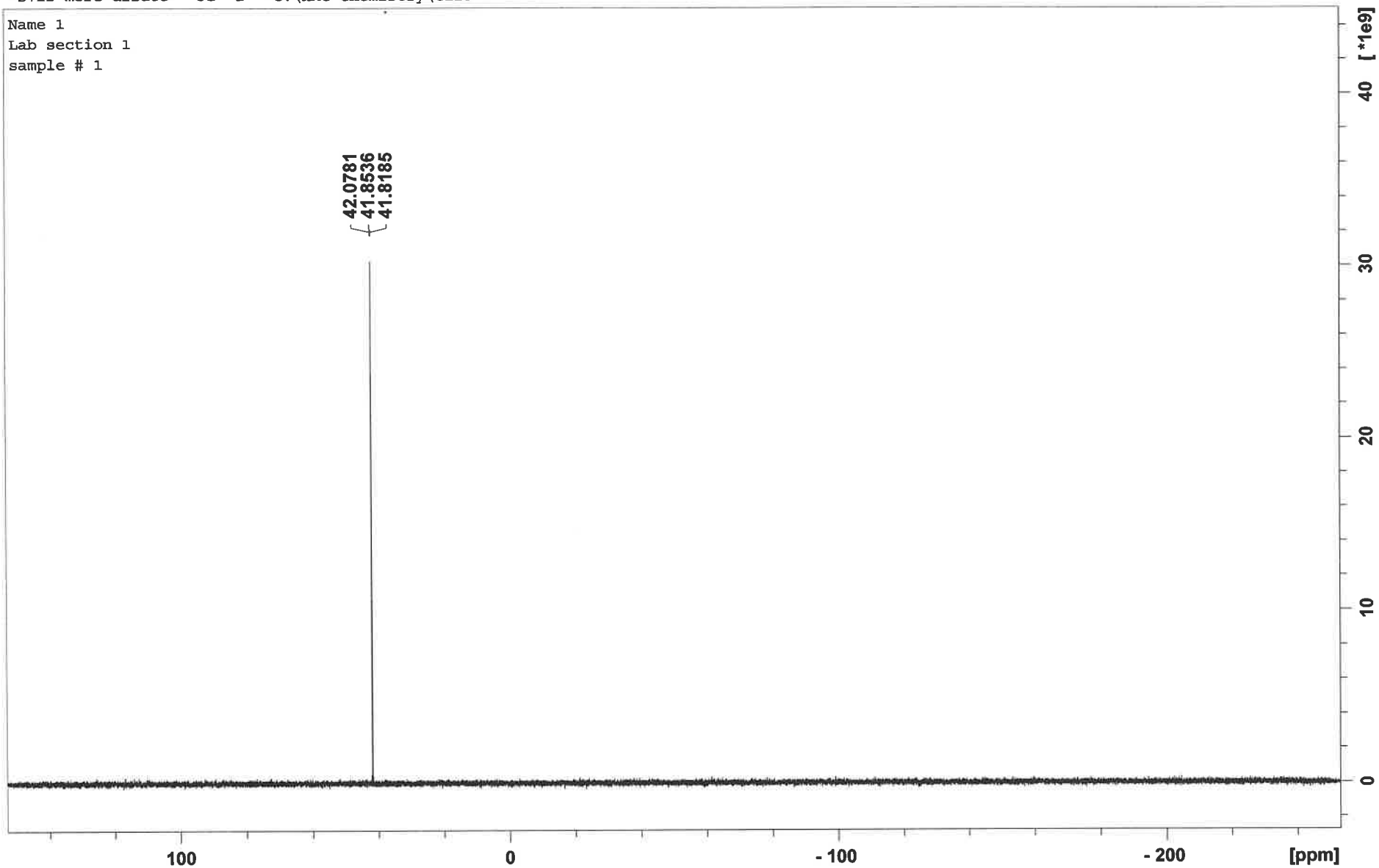
"S+I2 more dilute" 13 1 "C:\HMC Chemistry\C110"

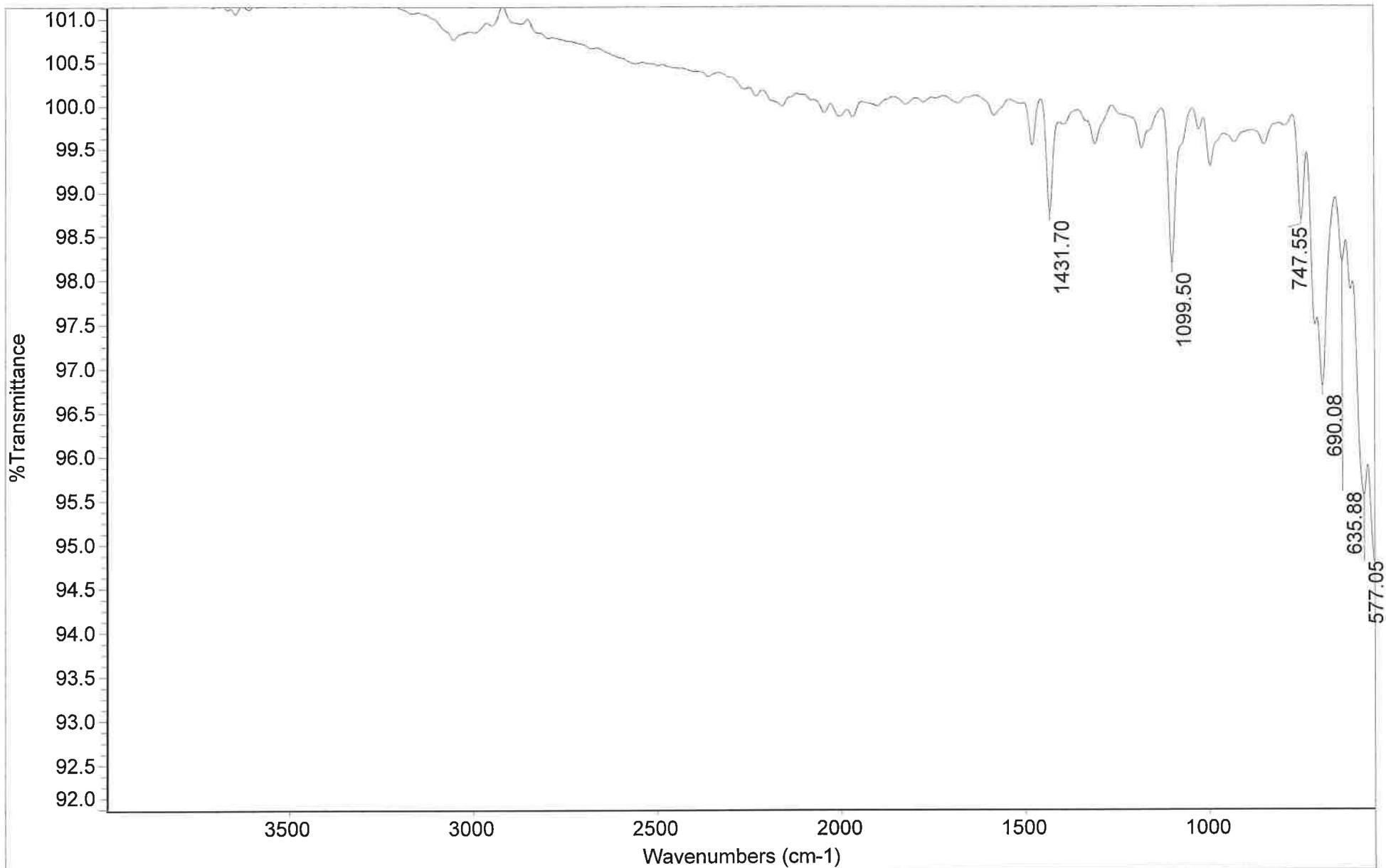
Name 1  
Lab section 1  
sample # 1



"S+I2 more dilute" 31 1 "C:\HMC Chemistry\C110"

Name 1  
Lab section 1  
sample # 1





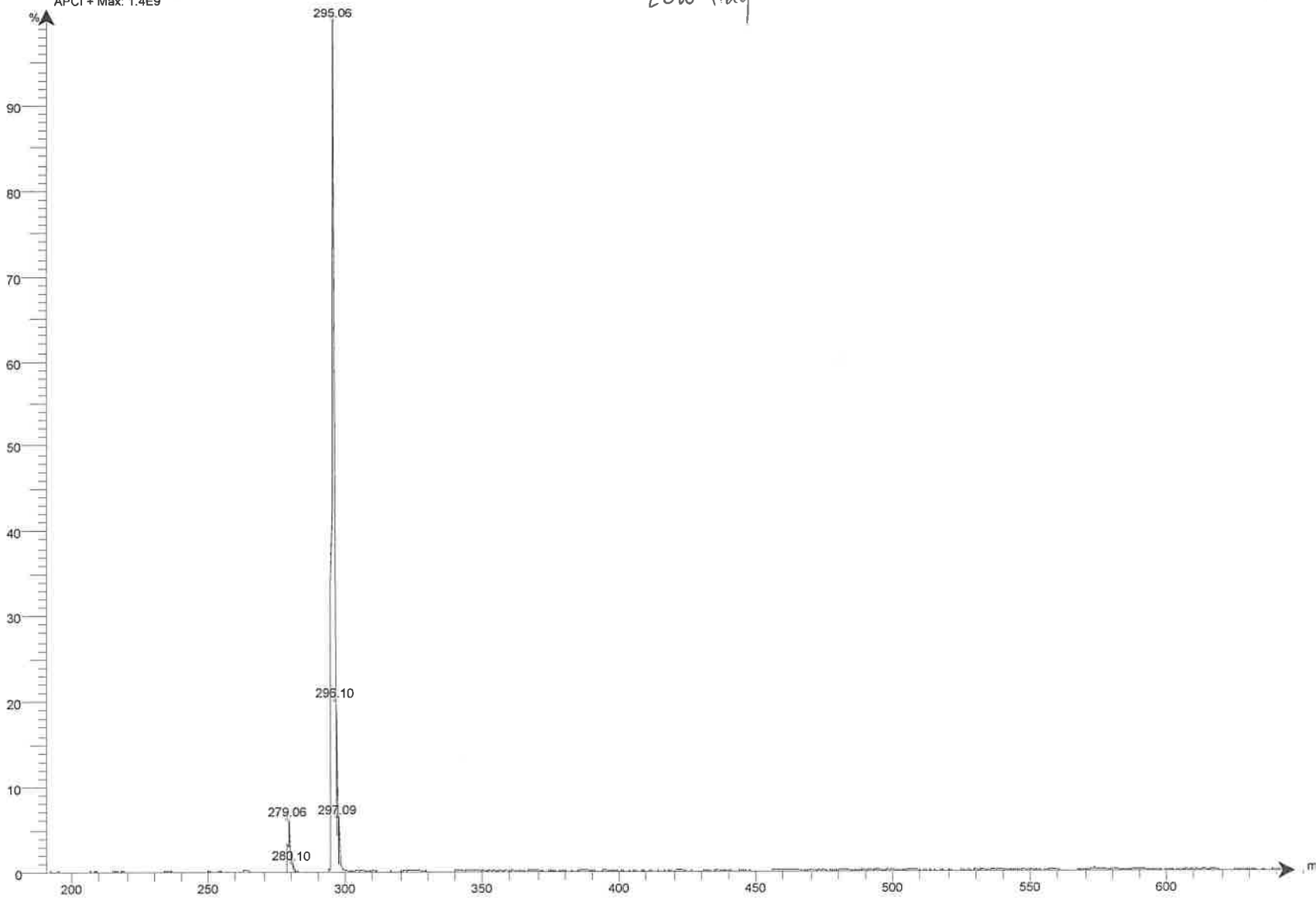
Date: Tue Dec 29 14:53:24 2020 (GMT-08:CS plus I2)

Scans: 16

Resolution: 16.000

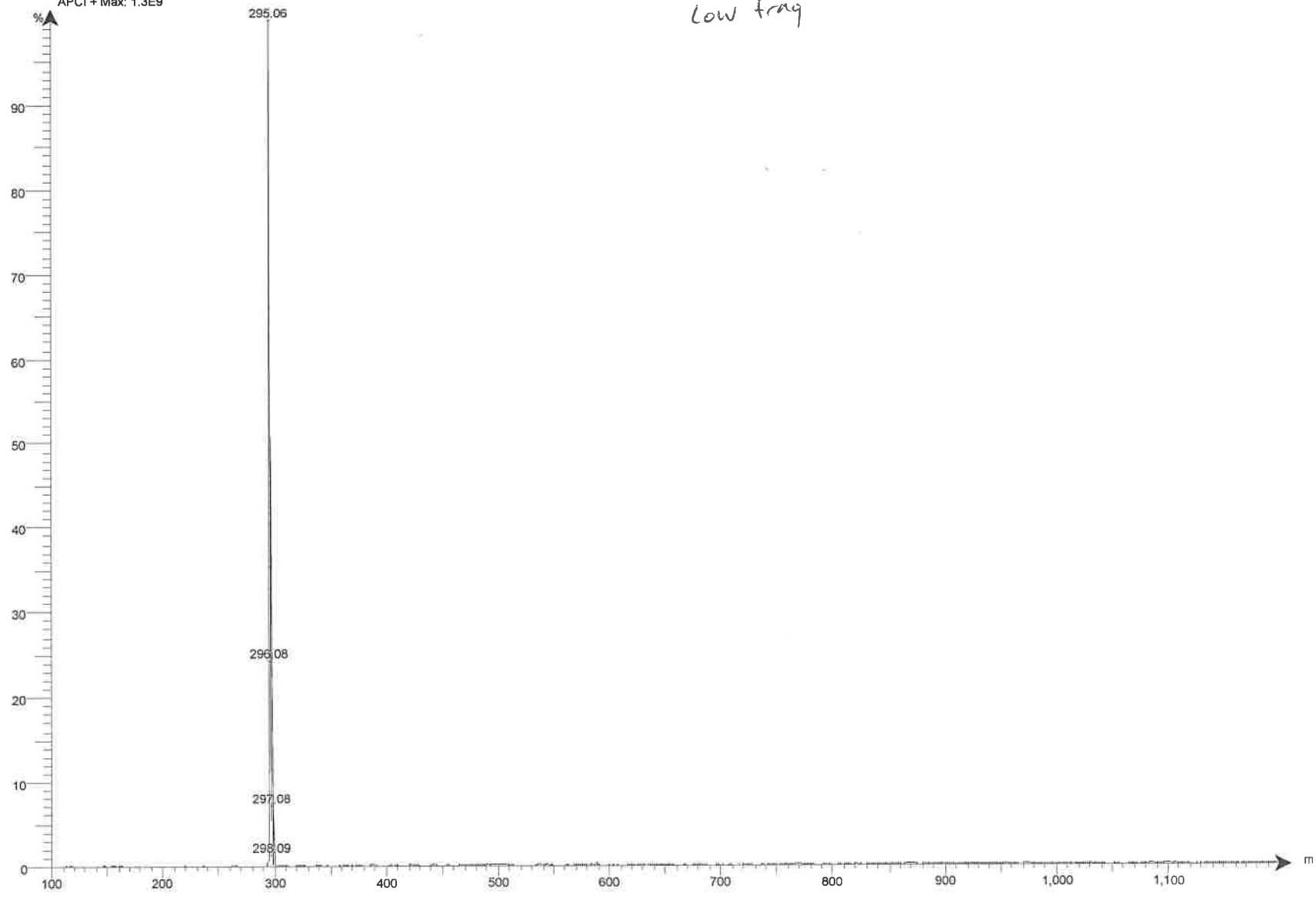
Intensity Spectrum RT 2.10 - 2.42 (19 scans) - Background Subtracted 0.16 - 0.44  
2021\_1\_7\_10\_49\_28\_is1 2021.01.07 10:50:17 Br2+I2;  
APCI+ Max: 1.4E9

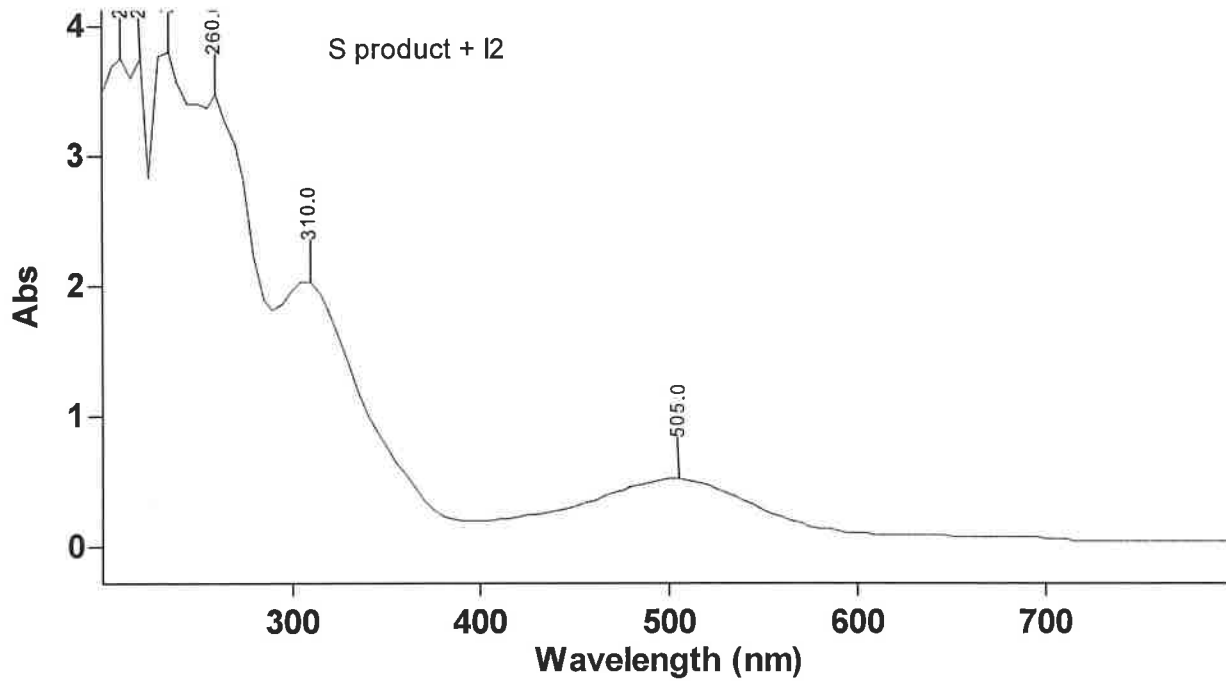
S + I<sub>2</sub> LowT  
Low frag



Intensity Spectrum RT 1.21 - 1.44 (14 scans) - Background Subtracted 0.07 - 0.55  
2021\_1\_7\_10\_55\_37\_is1 2021.01.07 10:55:50 Br2+I2;  
APCI+ Max: 1.3E9

$S + I_2$  high T  
low frag





## Scan Analysis Report

Report Time : Wed 16 Dec 09:48:08 AM 2020  
 Method  
 Batch: D:\chem 110\S rxn.DSW  
 Software version: 5.1.0.1016  
 Operator:

### Instrument Parameters

Instrument Cary 60  
 Instrument Version 2.00  
 Start (nm) 800.0  
 Stop (nm) 200.0  
 X Mode Nanometers  
 Y Mode Abs  
 UV-Vis Scan Rate (nm/min) 24000.00  
 UV-Vis Data Interval (nm) 5.00  
 UV-Vis Ave. Time (sec) 0.0125  
 Beam Mode Dual Beam  
 Baseline Correction Off  
 Cycle Mode Off  
 Comments

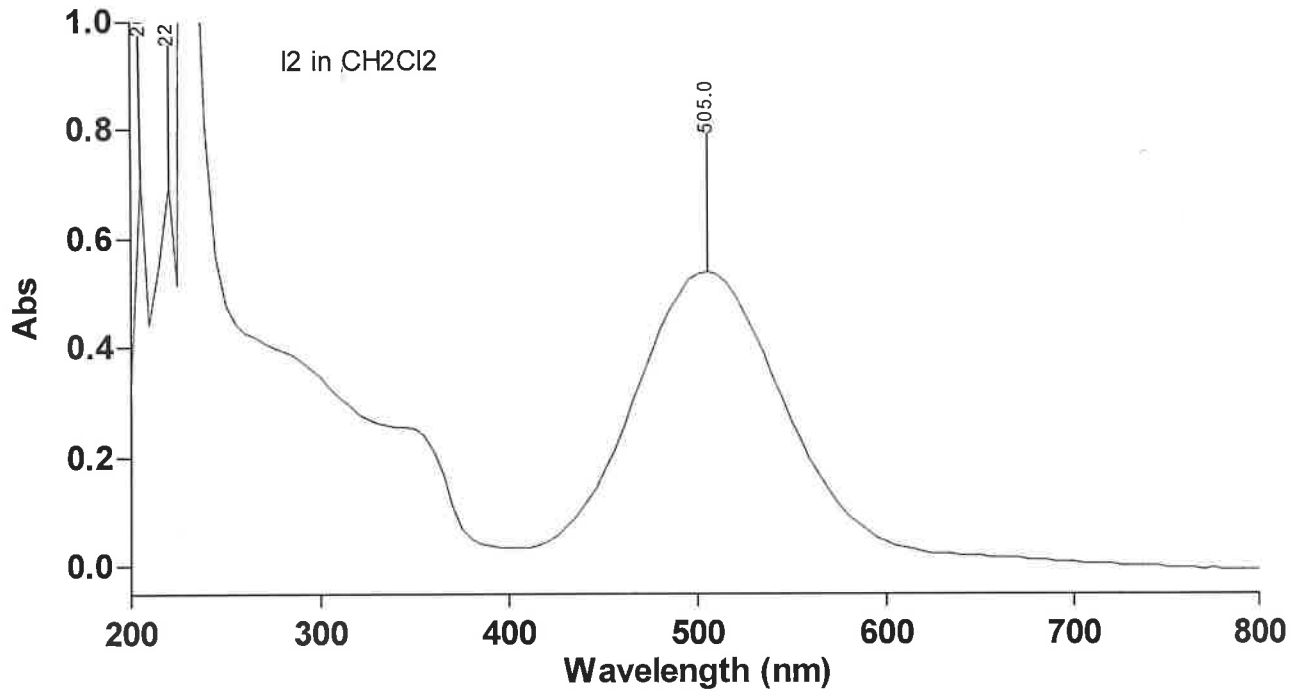
### Sample Name:

**S + I2**

Collection Time 12/16/2020 9:48:13 AM

Peak Table  
 Peak Style Peaks  
 Peak Threshold 0.0100





## Scan Analysis Report

Report Time : Wed 16 Dec 09:30:36 AM 2020  
Method  
Batch: C:\Users\Student\Desktop\PPH3 reactions.DSW  
Software version: 5.1.0.1016  
Operator:

### Instrument Parameters

Instrument Cary 60  
Instrument Version 2.00  
Start (nm) 800.0  
Stop (nm) 200.0  
X Mode Nanometers  
Y Mode Abs  
UV-Vis Scan Rate (nm/min) 24000.00  
UV-Vis Data Interval (nm) 5.00  
UV-Vis Ave. Time (sec) 0.0125  
Beam Mode Dual Beam  
Baseline Correction On  
Baseline Type Zero/baseline correction  
Baseline File Name  
Baseline Std Ref File Name  
Cycle Mode Off  
Comments

### Sample Name:

**iodine**

Collection Time

12/16/2020 9:30:39 AM