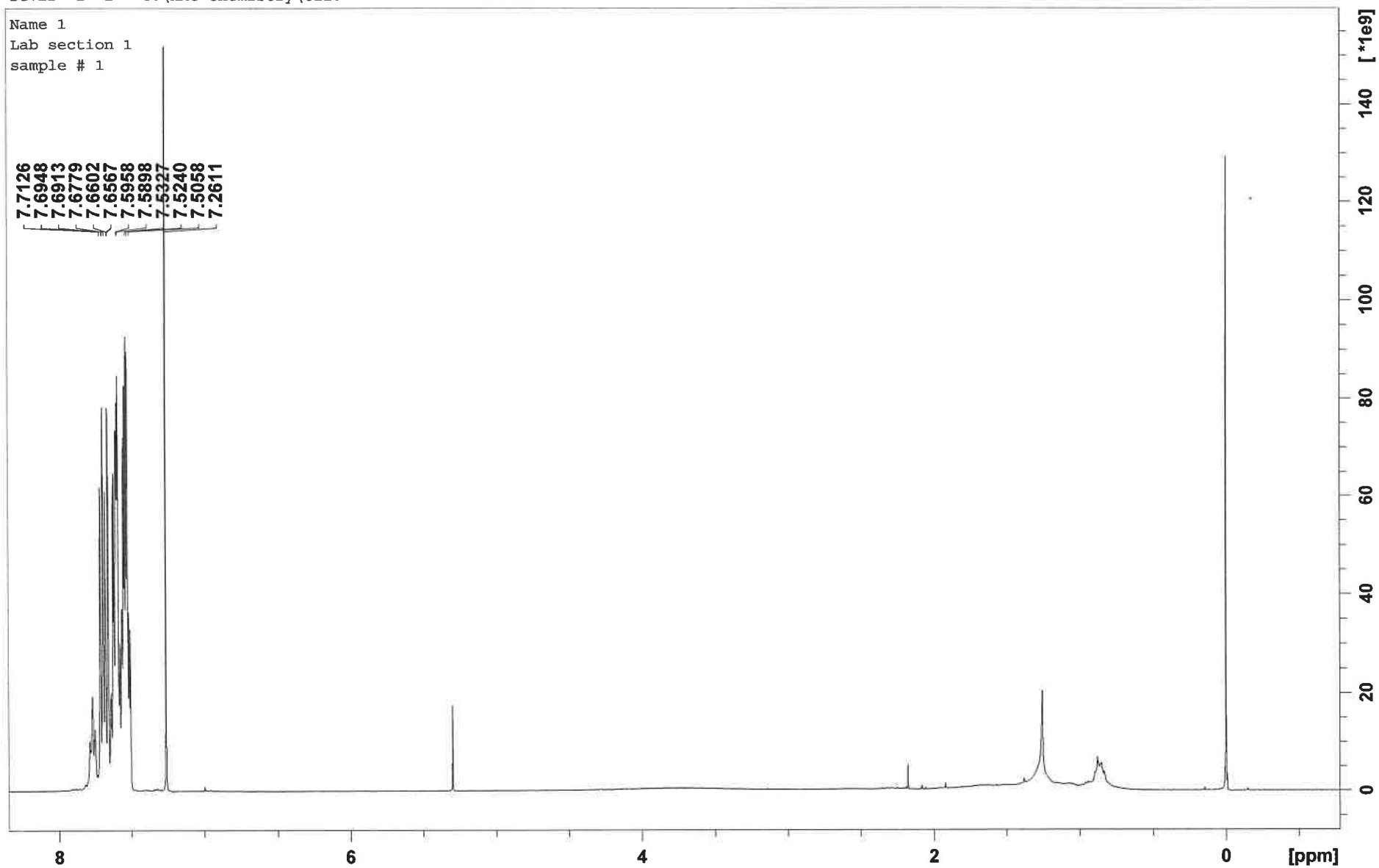


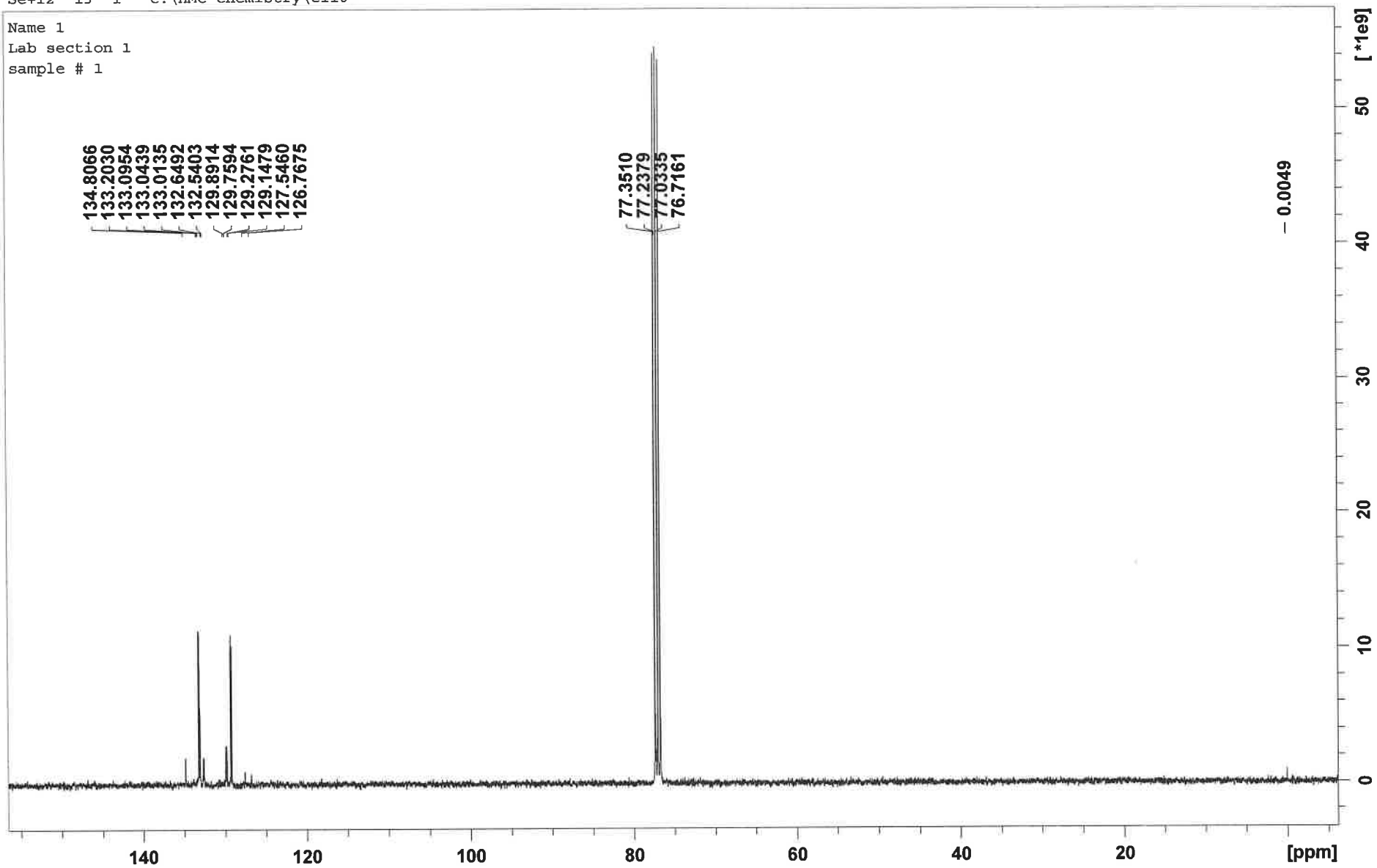
Se+I2 1 1 "C:\HMC Chemistry\C110"

Name 1
Lab section 1
sample # 1



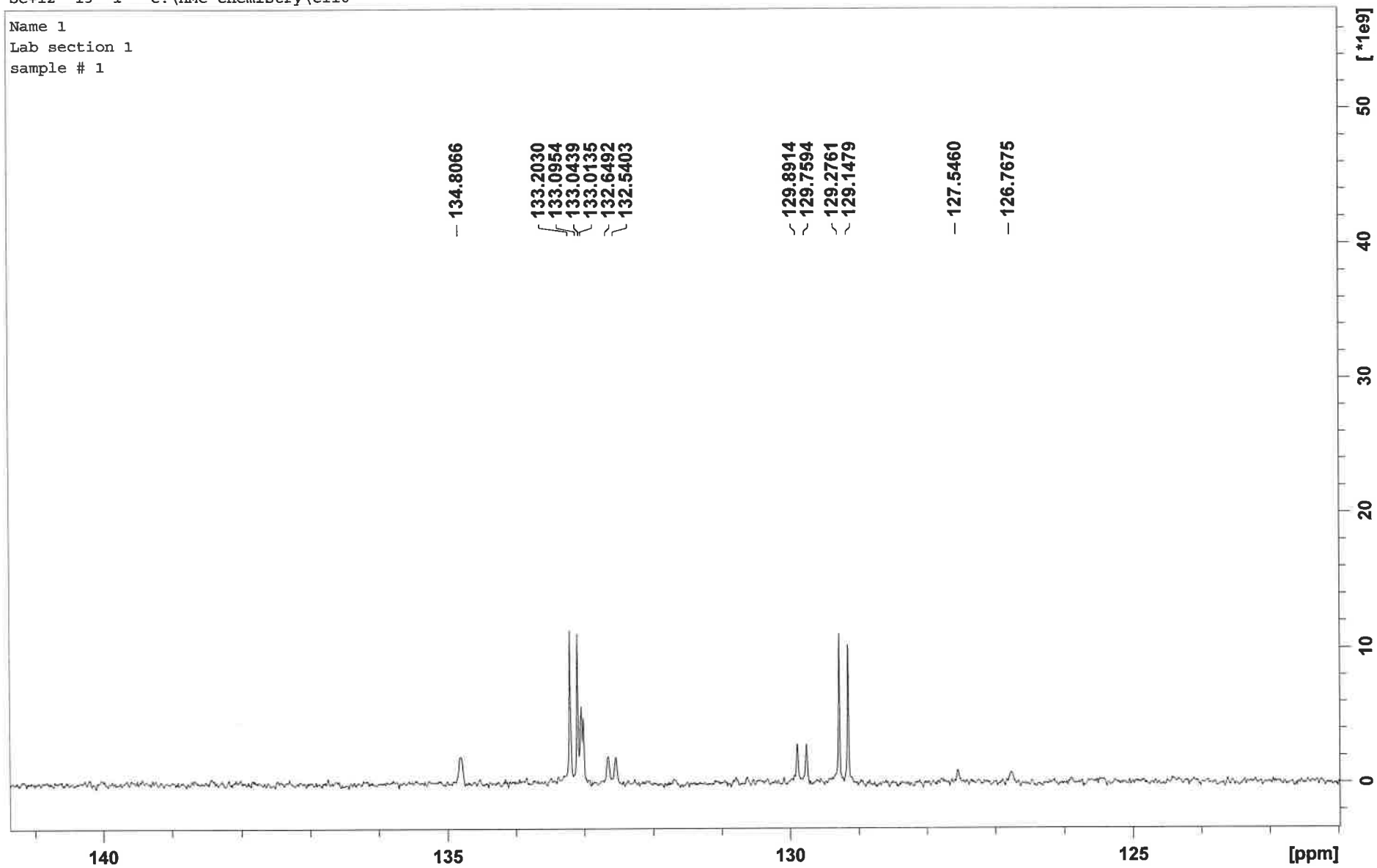
Se+I2 13 1 "C:\HMC Chemistry\C110"

Name 1
Lab section 1
sample # 1



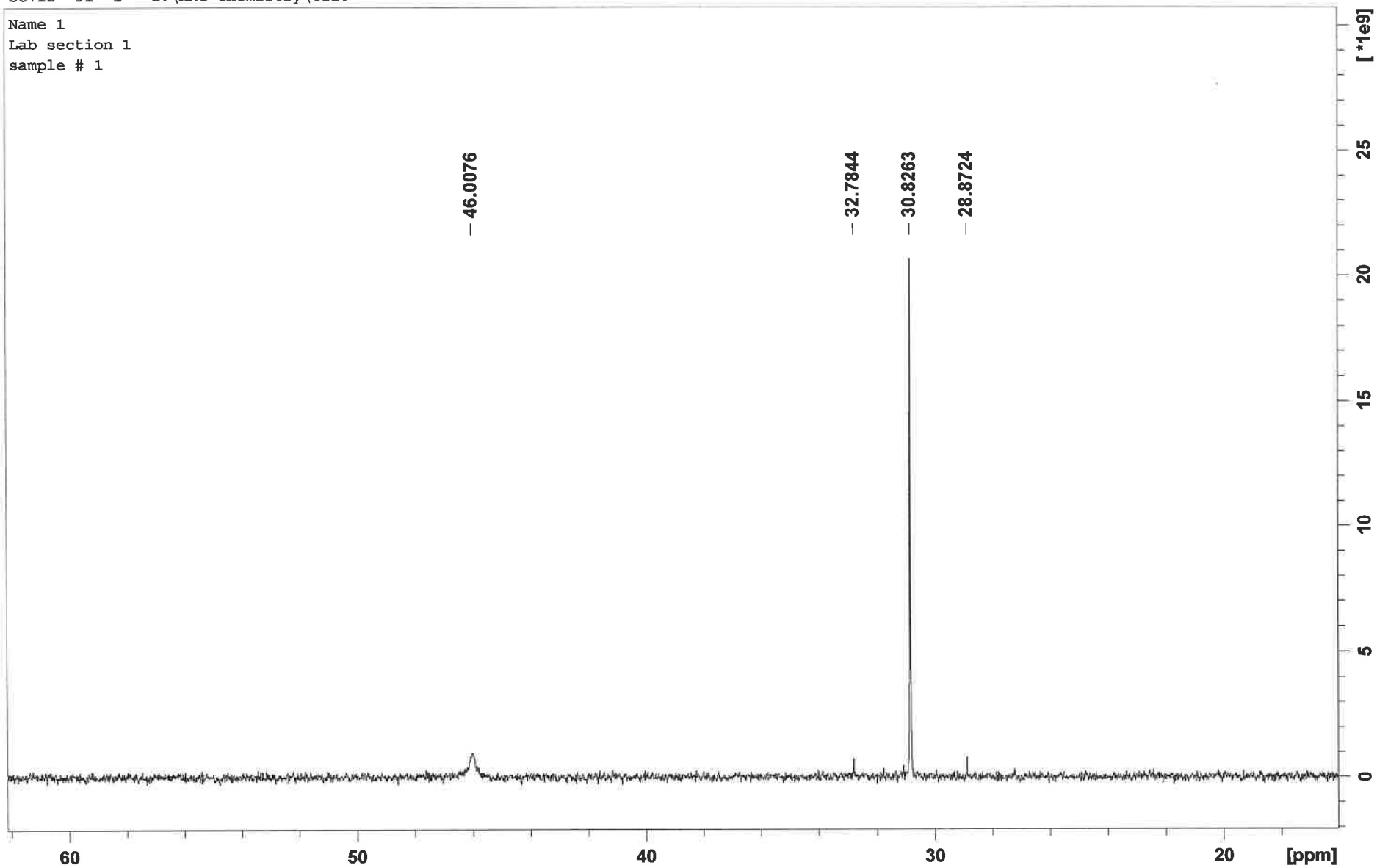
Se+I2 13 1 "C:\HMC Chemistry\C110"

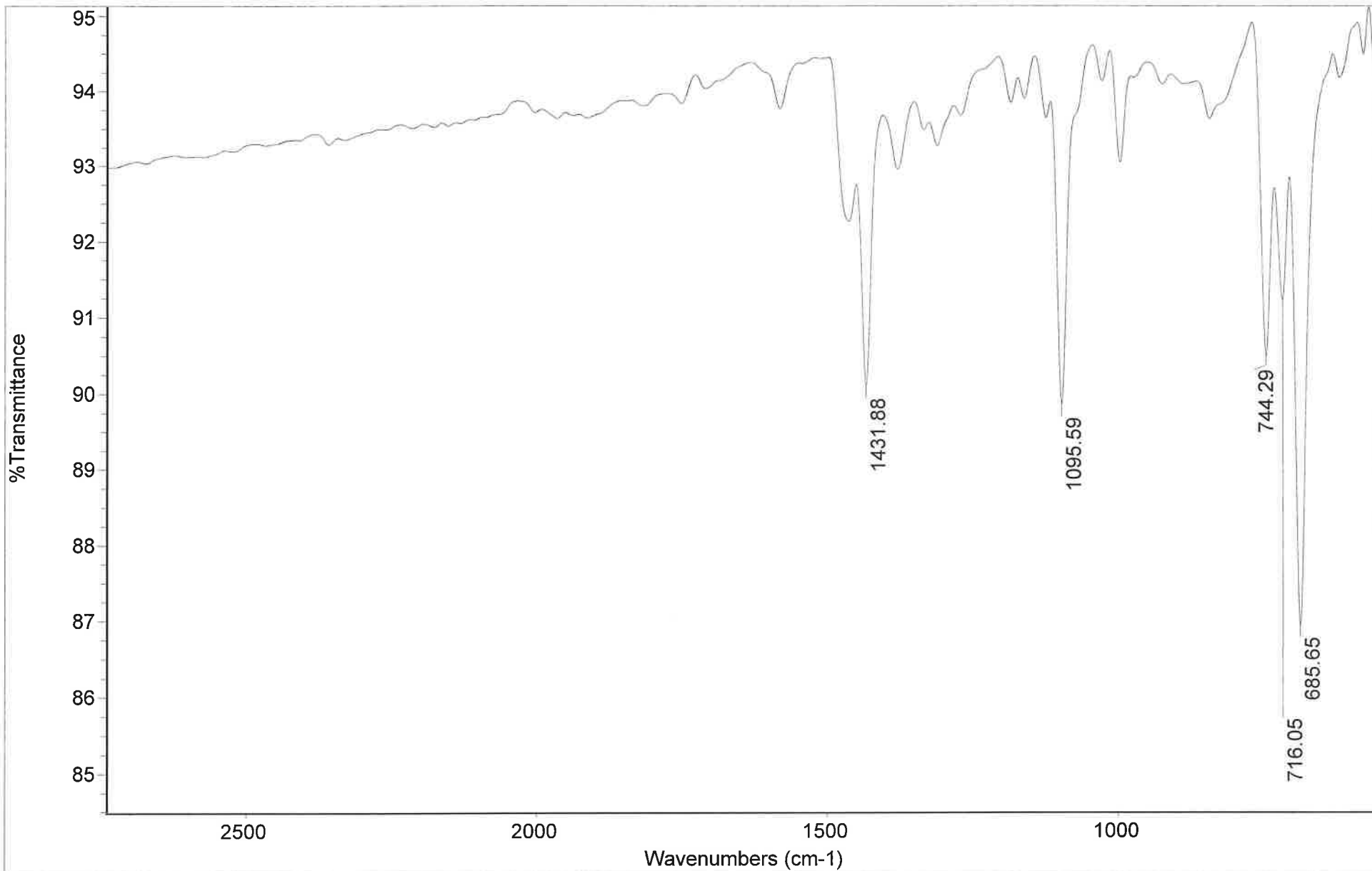
Name 1
Lab section 1
sample # 1



Se+I2 31 1 "C:\HMC Chemistry\C110"

Name 1
Lab section 1
sample # 1





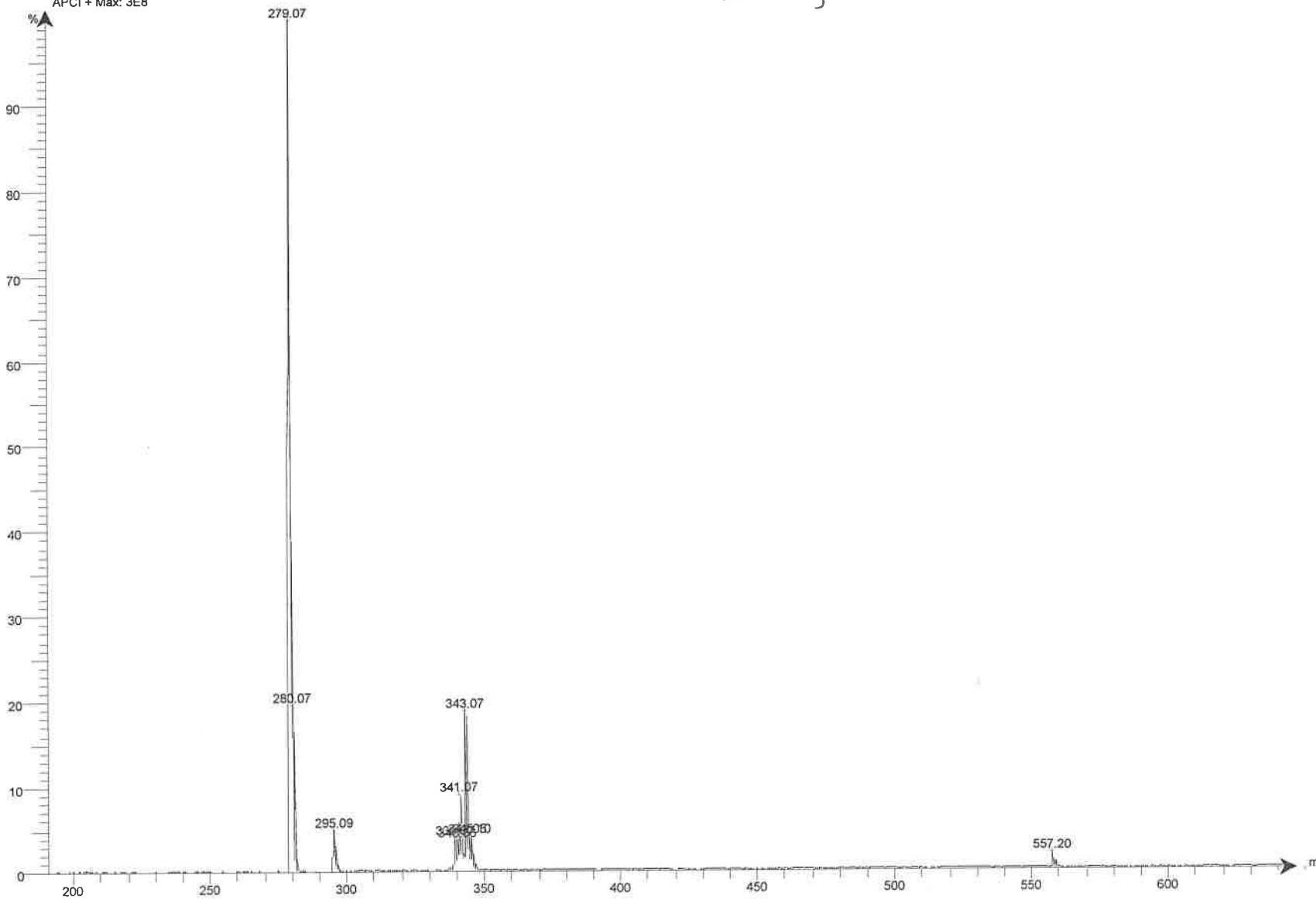
Date: Mon Jan 04 11:46:16 2021 (GMT-08:(Se_I2

Scans: 16

Resolution: 16.000

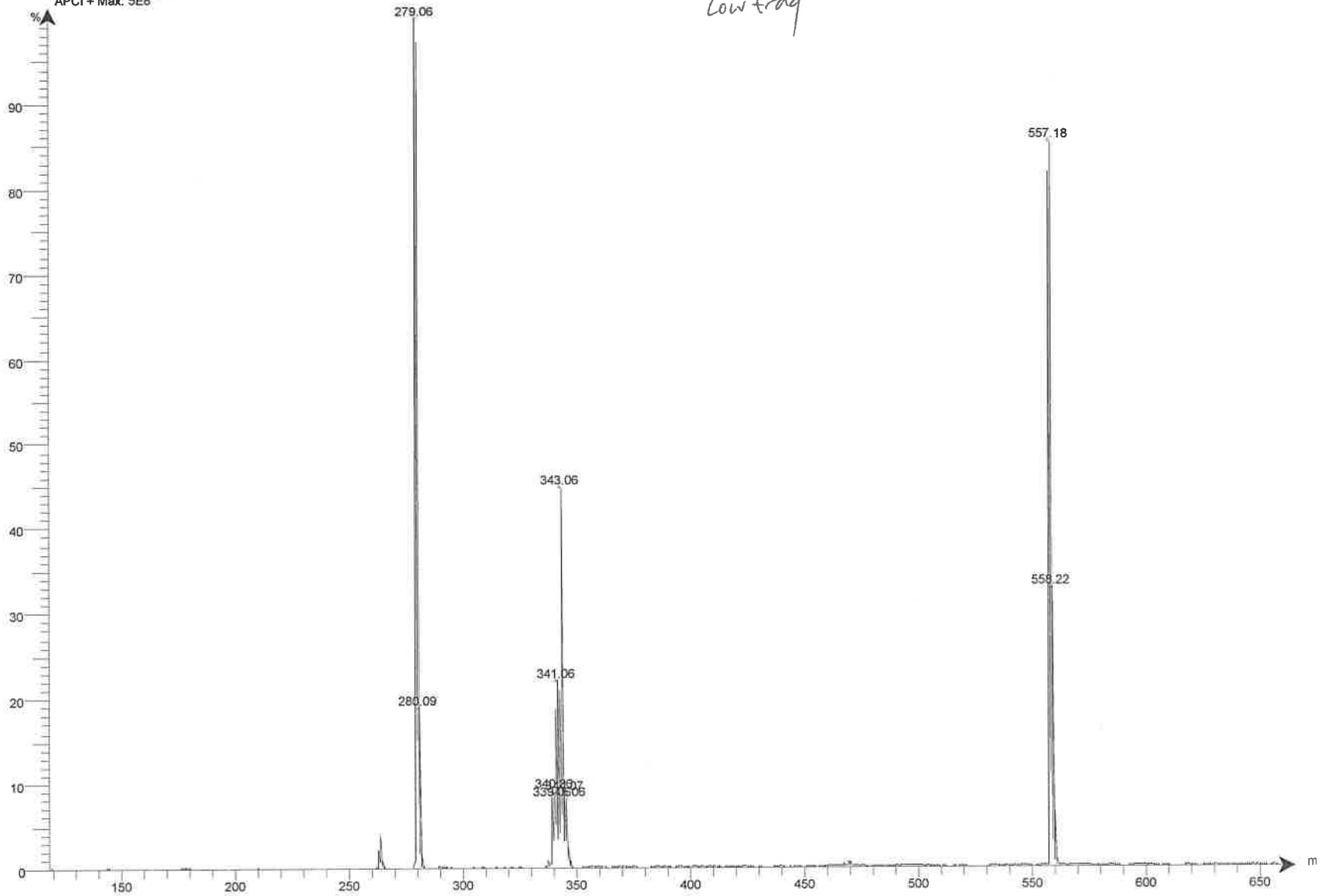
Intensity Spectrum RT 3.61 - 3.77 (10 scans) - Background Subtracted 0.16 - 0.44
2021_1_7_10_49_28_is1 2021.01.07 10:50:17 Br2+I2;
APCI+ Max: 3E8

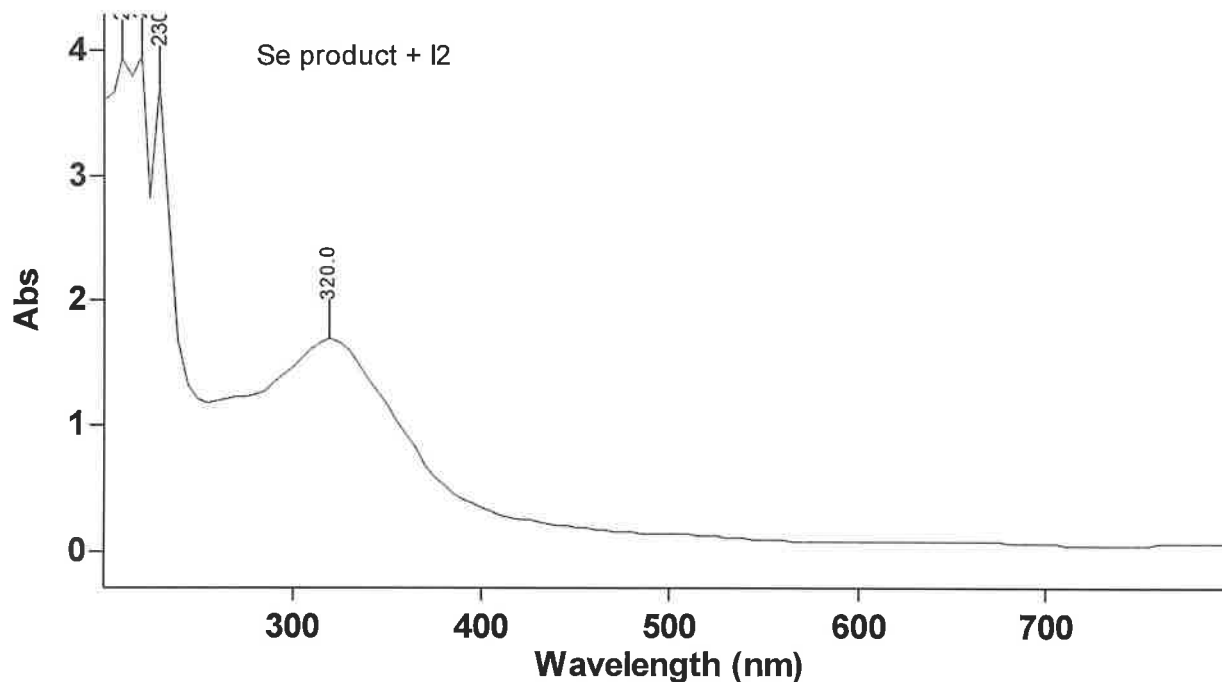
Se + I₂ Low T
Low frag



Intensity Spectrum RT 2.26 - 2.67 (24 scans) - Background Subtracted 0.07 - 0.55
2021_1_7_10_55_37_1a1 2021.01.07 10:55:50 Br2+I2;
APCI+ Max: 5E8

Set E_2 - high T
Low frag





Scan Analysis Report

Report Time : Wed 16 Dec 09:54:16 AM 2020
Method
Batch: D:\chem 110\Se rxn.DSW
Software version: 5.1.0.1016
Operator:

Instrument Parameters

Instrument Cary 60
Instrument Version 2.00
Start (nm) 800.0
Stop (nm) 200.0
X Mode Nanometers
Y Mode Abs
UV-Vis Scan Rate (nm/min) 24000.00
UV-Vis Data Interval (nm) 5.00
UV-Vis Ave. Time (sec) 0.0125
Beam Mode Dual Beam
Baseline Correction Off
Cycle Mode Off
Comments

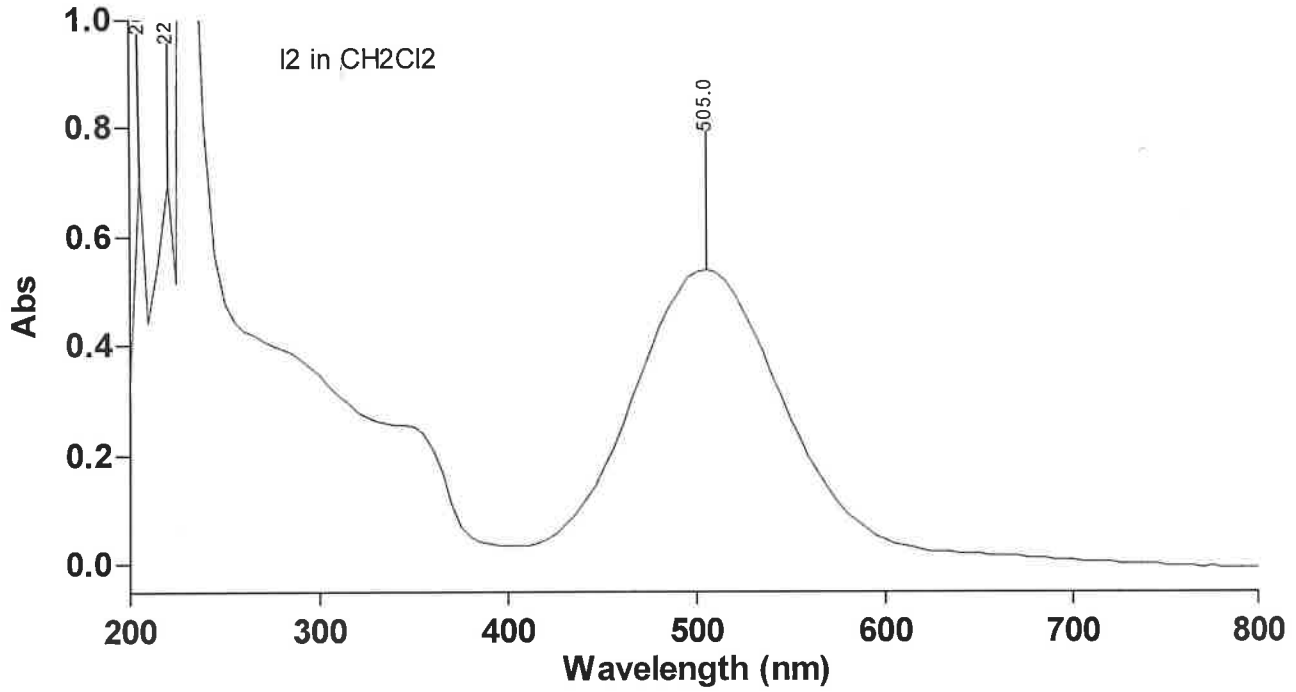
Sample Name:

se + I2

Collection Time 12/16/2020 9:54:18 AM

Peak Table

Peak Style	Peaks
Peak Threshold	0.0100



Scan Analysis Report

Report Time : Wed 16 Dec 09:30:36 AM 2020
Method
Batch: C:\Users\Student\Desktop\PPH3 reactions.DSW
Software version: 5.1.0.1016
Operator:

Instrument Parameters

Instrument Cary 60
Instrument Version 2.00
Start (nm) 800.0
Stop (nm) 200.0
X Mode Nanometers
Y Mode Abs
UV-Vis Scan Rate (nm/min) 24000.00
UV-Vis Data Interval (nm) 5.00
UV-Vis Ave. Time (sec) 0.0125
Beam Mode Dual Beam
Baseline Correction On
Baseline Type Zero/baseline correction
Baseline File Name
Baseline Std Ref File Name
Cycle Mode Off
Comments

Sample Name:

iodine

Collection Time

12/16/2020 9:30:39 AM